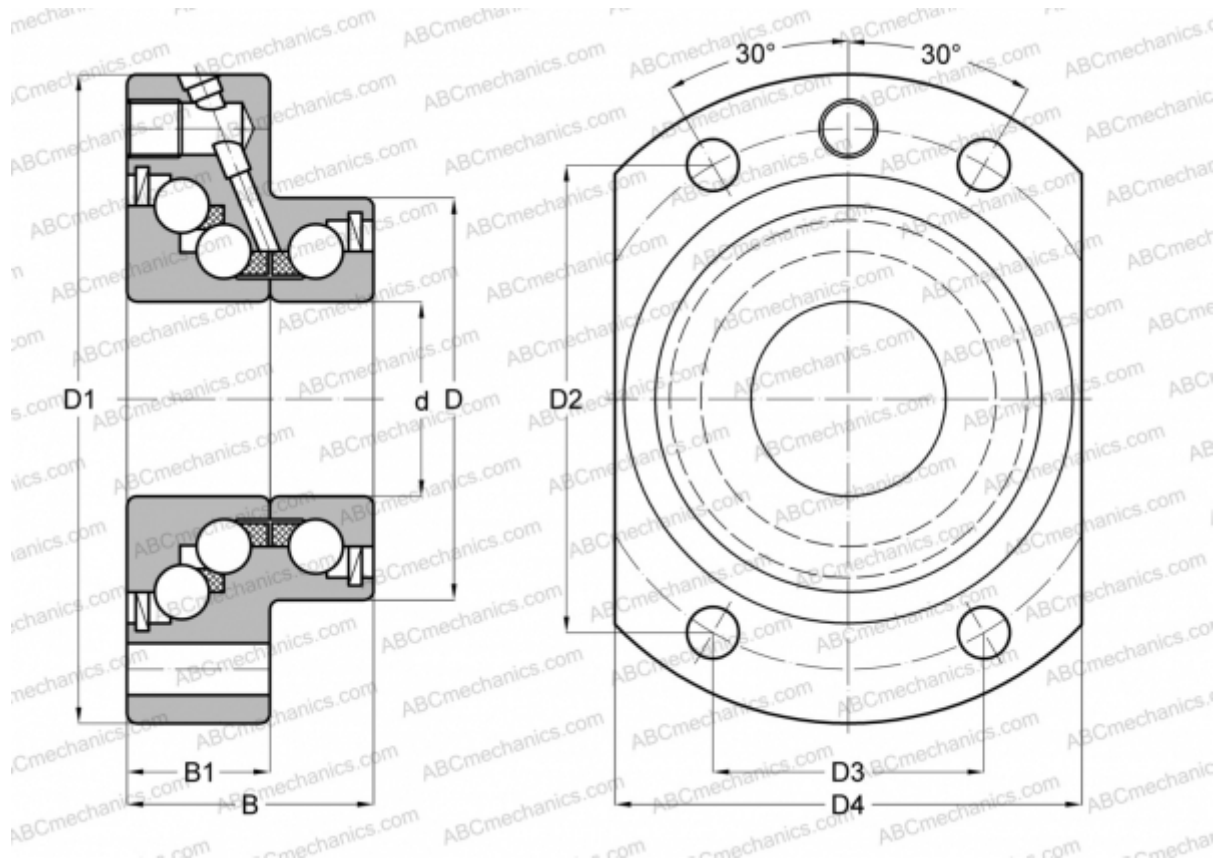


DKLFA 30100 2RS INA

Axial angular contact ball bearing

TYPE: Ball bearings, Axial angular contact ball bearing, Unit, Series DKLFA, double direction, with flange, lip seals on both side



Technical specification

DIMENSIONS, MM

d	30,000
D	62,000
D1	100,000
D4	72,000
B	38,000
B1	22,000

WEIGHT, KG 1,000

MANUFACTURER [INA](http://www.ina.com)