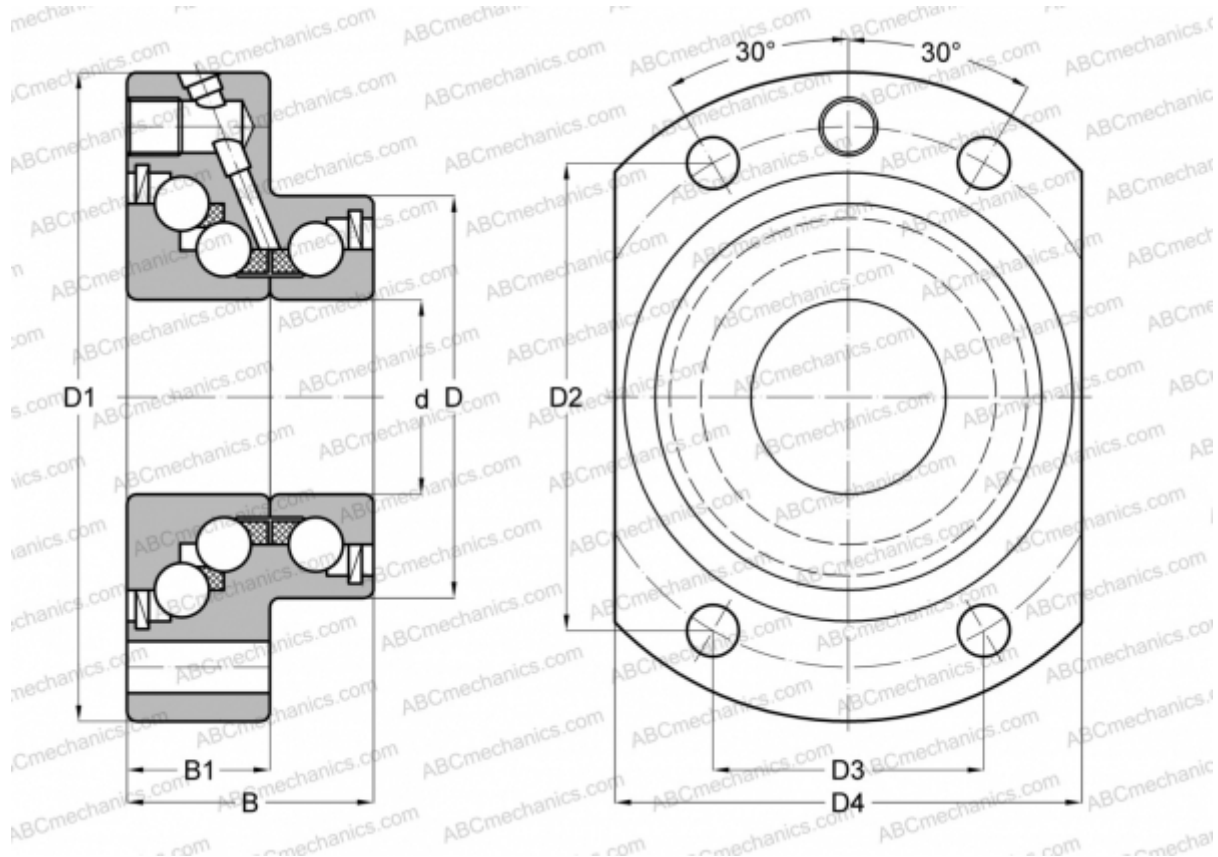


DKLFA 30110 2RS INA

Axial angular contact ball bearing

TYPE: Ball bearings, Axial angular contact ball bearing, Unit, Series DKLFA, double direction, with flange, lip seals on both side



Technical specification

DIMENSIONS, MM

d	30,000
D	75,000
D1	110,000
D4	85,000
B	56,000
B1	35,000

WEIGHT, KG 2,500

MANUFACTURER [INA](http://www.ina.com)