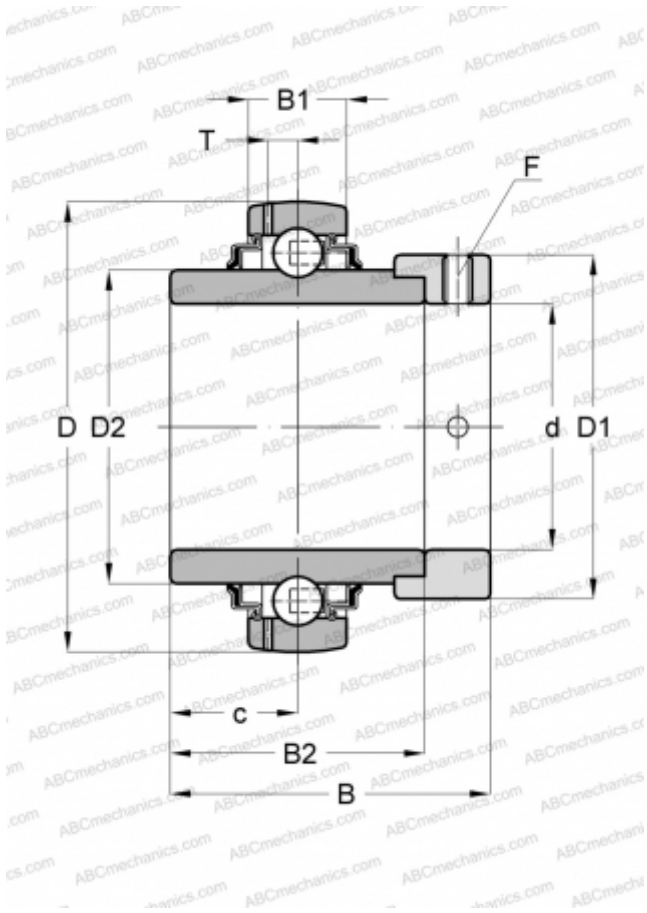


GE17-KRR-B INA

Insert bearings

TYPE: Ball bearings, Radial insert bearings, With eccentric locking collar, Spherical outer ring, Series GE..-KRR-B(INA), seals on both side



Technical specification

DIMENSIONS, MM

d	17,000
D	40,000
D1	28,000
D2	23,900
B	37,400
B1	12,000
B2	27,800
c	13,900
T	3,400
F	3

WEIGHT, KG

0,200

MANUFACTURER

[INA](#)

REPLACES

GE17-XL-KRR-B