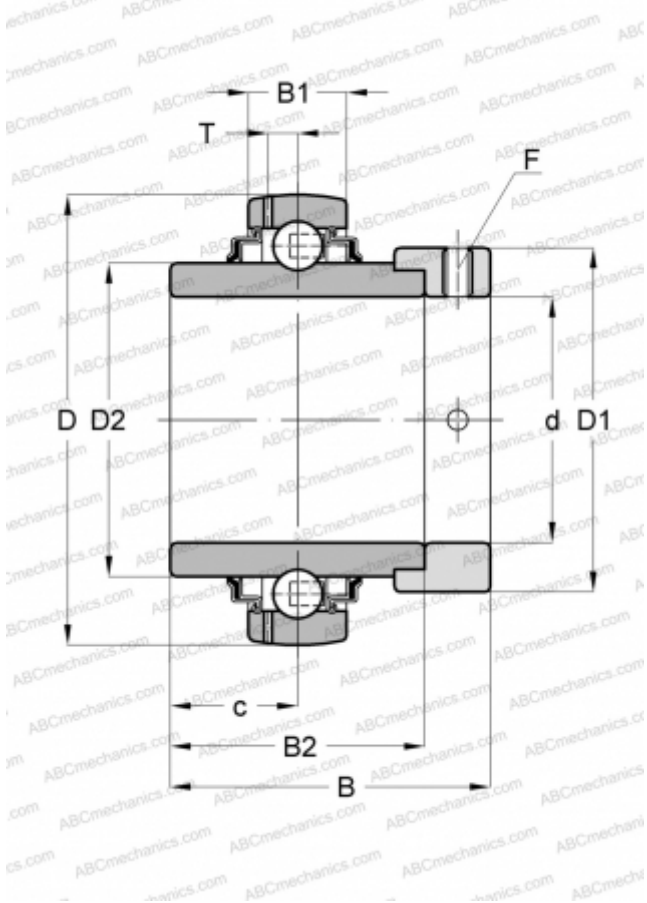




GE75-KRR-B INA

Insert bearings

TYPE: Ball bearings, Radial insert bearings, With eccentric locking collar, Spherical outer ring, Series GE..-KRR-B(INA), seals on both side



Technical specification

DIMENSIONS, MM	
d	75,000
D	130,000
D1	100,000
D2	90,000
B	67,000
B1	28,000
B2	49,500
c	21,500
T	8,500
F	6
WEIGHT, KG	
2,140	
MANUFACTURER	
INA	
REPLACES	
GE75-XL-KRR-B	

