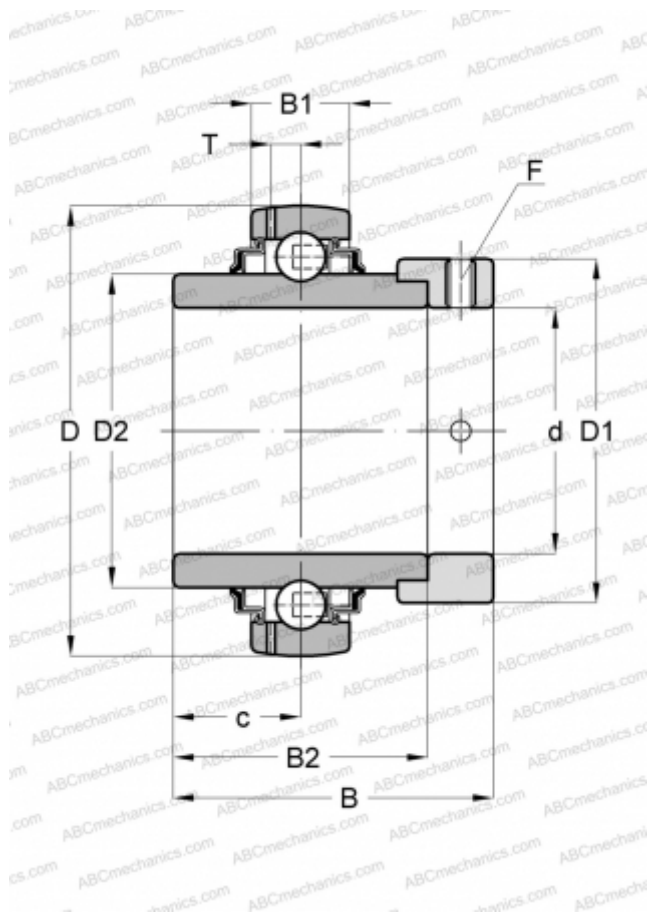




GE90-KRR-B INA

Insert bearings

TYPE: Ball bearings, Radial insert bearings, With eccentric locking collar, Spherical outer ring, Series GE..-KRR-B(INA), seals on both side



Technical specification

DIMENSIONS, MM

d	90,000
D	160,000
D1	118,000
D2	109,400
B	69,500
B1	32,000
B2	52,000
c	23,000
T	10,000
F	6

WEIGHT, KG

3,560

MANUFACTURER

[INA](#)

REPLACES

GE90-XL-KRR-B

