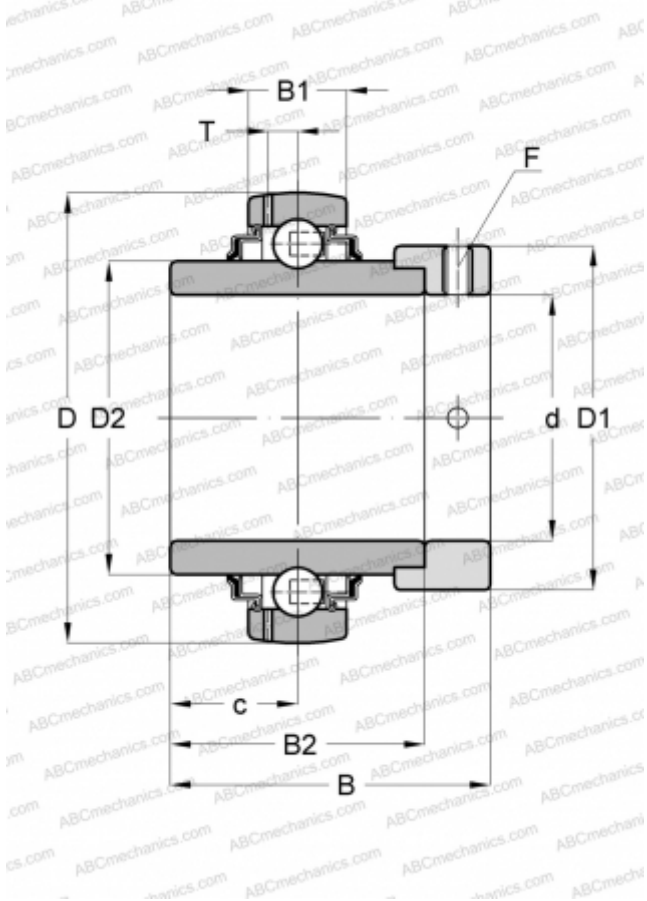


GE45-KRR-B-FA125.5 INA

Insert bearings

TYPE: Ball bearings, Radial insert bearings, With eccentric locking collar, Spherical outer ring, Series GE..-KRR-B(INA), seals on both side, corrosion resistant



Technical specification

DIMENSIONS, MM

d	45,000
D	85,000
D1	63,000
D2	57,900
B	56,500
B1	22,000
B2	42,900
c	21,400
T	6,400
F	5

WEIGHT, KG

0,830

MANUFACTURER

[INA](#)

REPLACES

GE45-XL-KRR-B-FA125.5