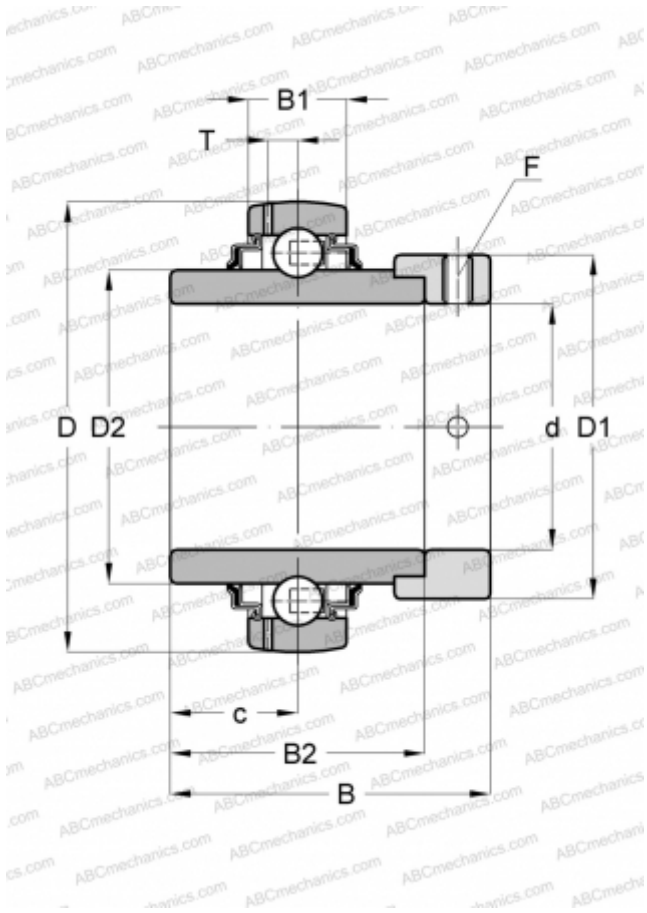


GNE35-KRR-B INA

Insert bearings

TYPE: Ball bearings, Radial insert bearings, With eccentric locking collar, Spherical outer ring, Series GNE..-KRR-B(INA), seals on both side



Technical specification

DIMENSIONS, MM

d	35,000
D	80,000
D1	55,000
D2	48,000
B	51,600
B1	22,000
B2	38,100
c	18,300
T	6,900
F	5

WEIGHT, KG

0,740

MANUFACTURER

[INA](#)

REPLACES

GNE35-XL-KRR-B