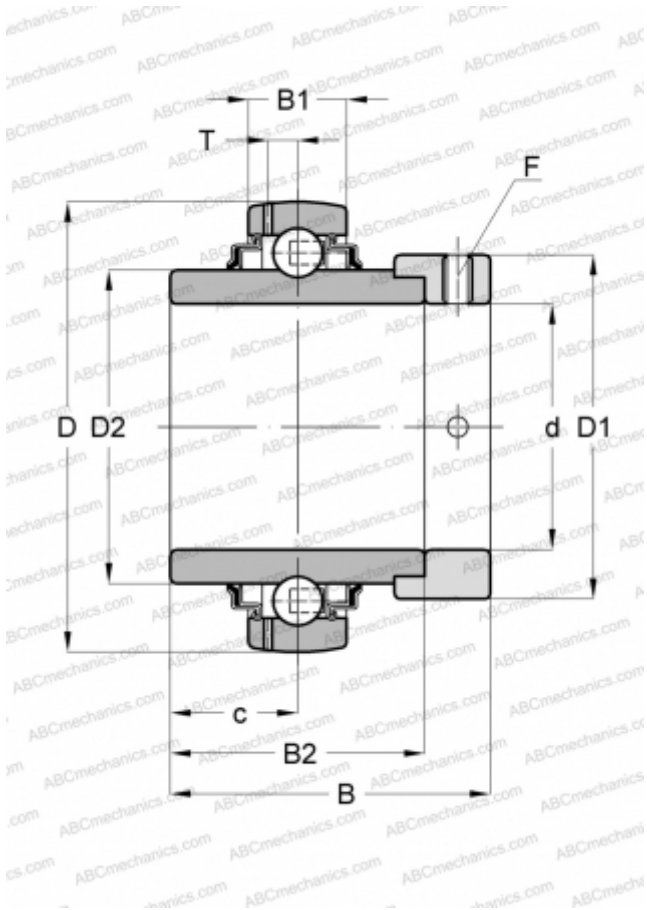


GNE50-KRR-B INA

Insert bearings

TYPE: Ball bearings, Radial insert bearings, With eccentric locking collar, Spherical outer ring, Series GNE..-KRR-B(INA), seals on both side



Technical specification

DIMENSIONS, MM

d	50,000
D	110,000
D1	75,800
D2	68,800
B	66,750
B1	29,000
B2	49,200
c	24,600
T	8,700
F	5

WEIGHT, KG

1,820

MANUFACTURER

[INA](#)

REPLACES

GNE50-XL-KRR-B