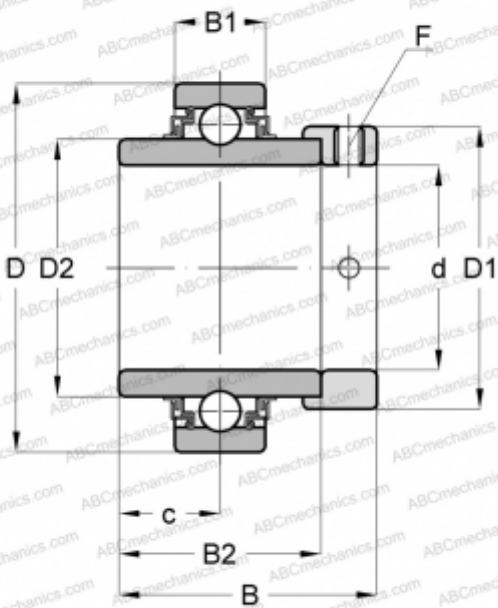




E35-KLL INA

Insert bearings

TYPE: Ball bearings, Radial insert bearings, With eccentric locking collar, Cylindrical outer ring, Series E...KLL(INA), seals on both side



Technical specification

DIMENSIONS, MM	
d	35,000
D	72,000
D1	51,000
D2	46,800
B	51,300
B1	19,000
B2	37,700
c	18,800
F	5
WEIGHT, KG	
0,560	
MANUFACTURER	
INA	
REPLACES	
E35-XL-KLL	

