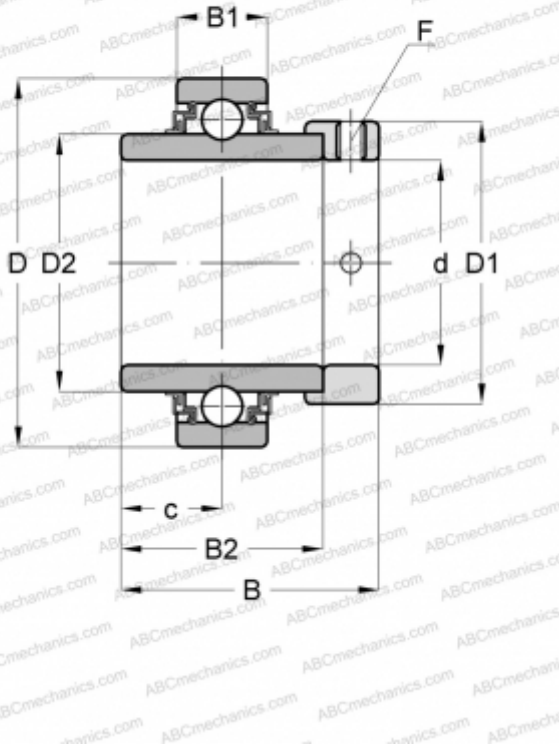


E40-KLL INA

Insert bearings

TYPE: Ball bearings, Radial insert bearings, With eccentric locking collar, Cylindrical outer ring, Series E..-KLL(INA), seals on both side



Technical specification

DIMENSIONS, MM

d	40,000
D	80,000
D1	58,000
D2	52,300
B	56,500
B1	21,000
B2	42,900
c	21,400
F	5

WEIGHT, KG

0,760

MANUFACTURER

[INA](#)

REPLACES

E40-XL-KLL