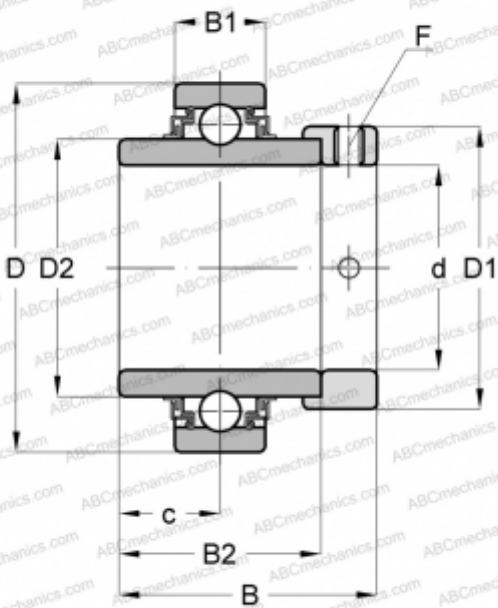




E50-KLL INA

Insert bearings

TYPE: Ball bearings, Radial insert bearings, With eccentric locking collar, Cylindrical outer ring, Series E...KLL(INA), seals on both side



Technical specification

DIMENSIONS, MM	
d	50,000
D	90,000
D1	69,000
D2	62,800
B	62,800
B1	22,000
B2	49,200
c	24,600
F	5
WEIGHT, KG	
1,000	
MANUFACTURER	
<a href="#">INA</a>	
REPLACES	
E50-XL-KLL	

