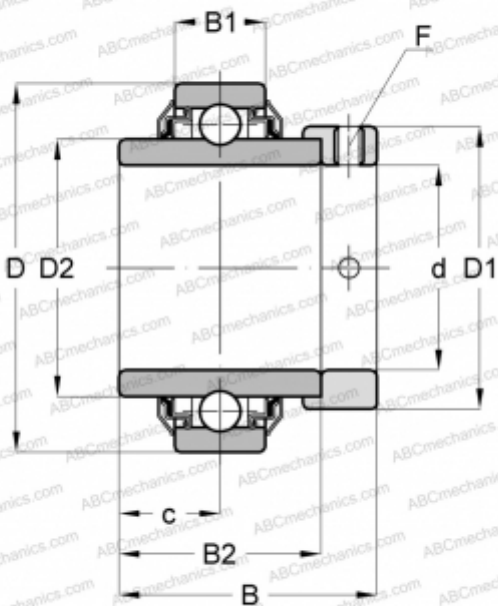




E35-KRR INA

Insert bearings

TYPE: Ball bearings, Radial insert bearings, With eccentric locking collar, Cylindrical outer ring, Series E...KRR(INA), seals on both side



Technical specification

DIMENSIONS, MM

d	35,000
D	72,000
D1	51,000
D2	46,800
B	51,300
B1	19,000
B2	37,700
c	18,800
F	5

WEIGHT, KG

0,570

MANUFACTURER

[INA](#)

REPLACES

E35-XL-KRR

