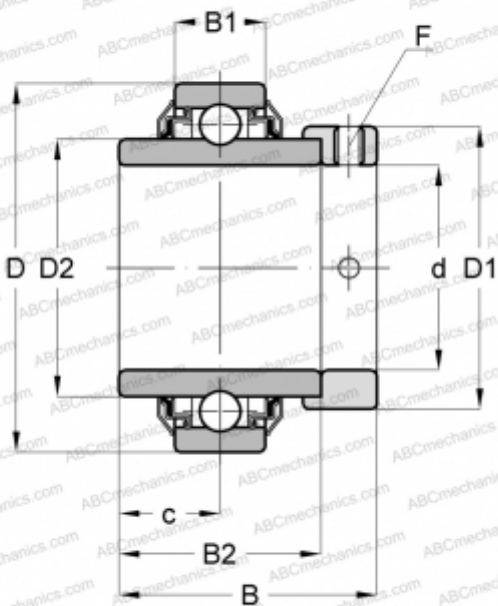




E45-KRR INA

Insert bearings

TYPE: Ball bearings, Radial insert bearings, With eccentric locking collar, Cylindrical outer ring, Series E..-KRR(INA), seals on both side



Technical specification

DIMENSIONS, MM

d	45,000
D	85,000
D1	63,000
D2	57,900
B	56,500
B1	22,000
B2	42,900
c	21,400
F	5

WEIGHT, KG

0,850

MANUFACTURER

[INA](#)

REPLACES

E45-XL-KRR

