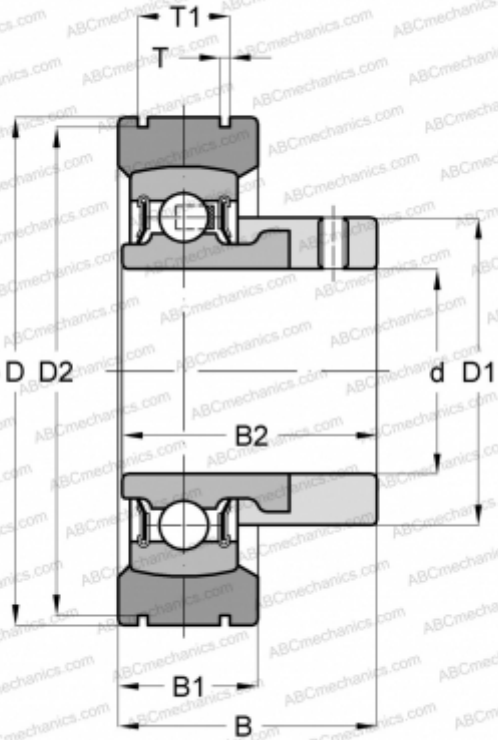




PE20 INA

Insert bearings

TYPE: Ball bearings, Radial insert bearings, With steel aligning ring, Eccentric locking collar, series PE(INA), seals on both side



Technical specification

DIMENSIONS, MM

d	20,000
D	55,000
D1	33,000
D2	52,600
B	31,500
B1	16,000
B2	31,000
T	1,350
T1	11,200

WEIGHT, KG

0,240

MANUFACTURER

[INA](#)

REPLACES

PE20-XL

ASSOCIATED PRODUCTS

RAE20-NPP-B

