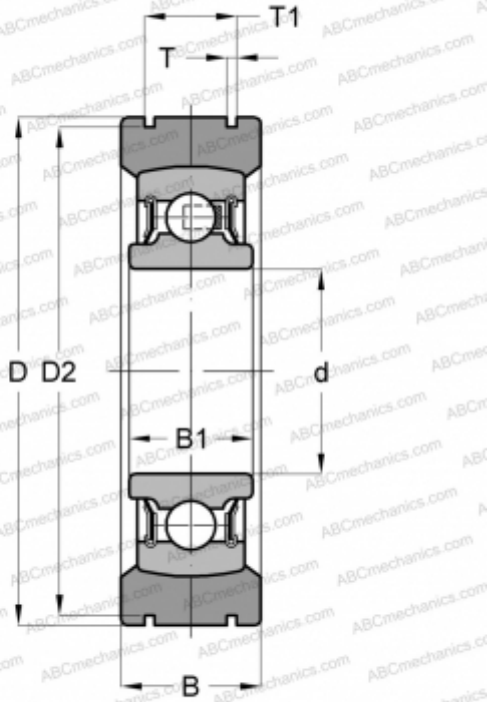


## BE30 INA

Insert bearings

TYPE: Ball bearings, Radial insert bearings, With steel aligning ring, Cylindrical outer ring, series BE(INA), seals on both side



### Technical specification

#### DIMENSIONS, MM

d	30,000
D	72,000
D2	68,800
B	21,000
B1	16,000
T	1,900
T1	14,400
E	206

#### WEIGHT, KG

0,370

#### MANUFACTURER

[INA](#)

#### REPLACES

BE30-XL

#### ASSOCIATED PRODUCTS

206-NPP-B