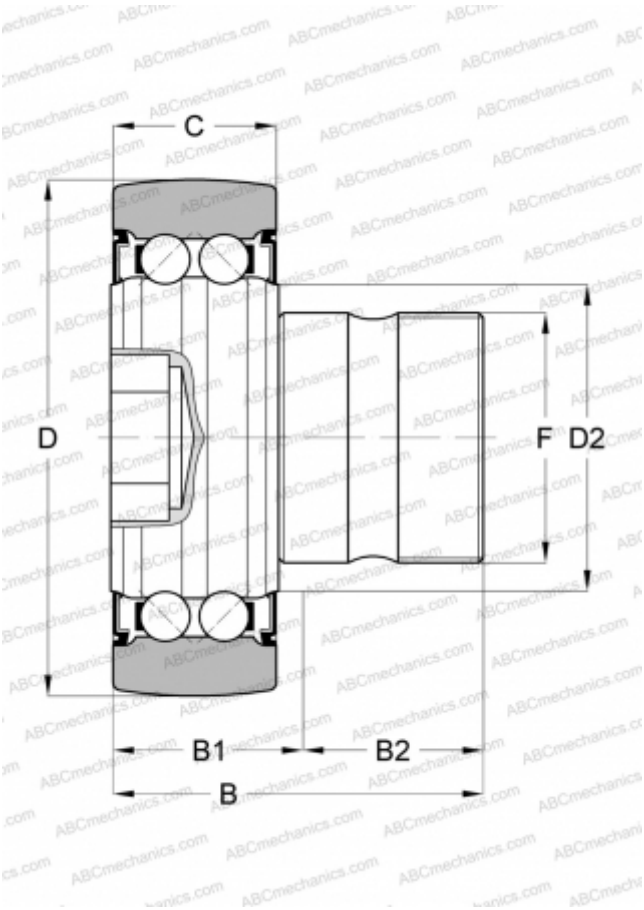




KR5204-2RS INA

Stud type track rollers

TYPE: Ball bearings, Stud type track rollers, Double row, Lip seals on both sides



Technical specification

DIMENSIONS, MM	
d	20,000
D	52,000
D2	26,800
B	63,600
B1	22,500
B2	41,500
C	20,600
F	M20X1,5
WEIGHT, KG	
0,380	
MANUFACTURER	
INA	

