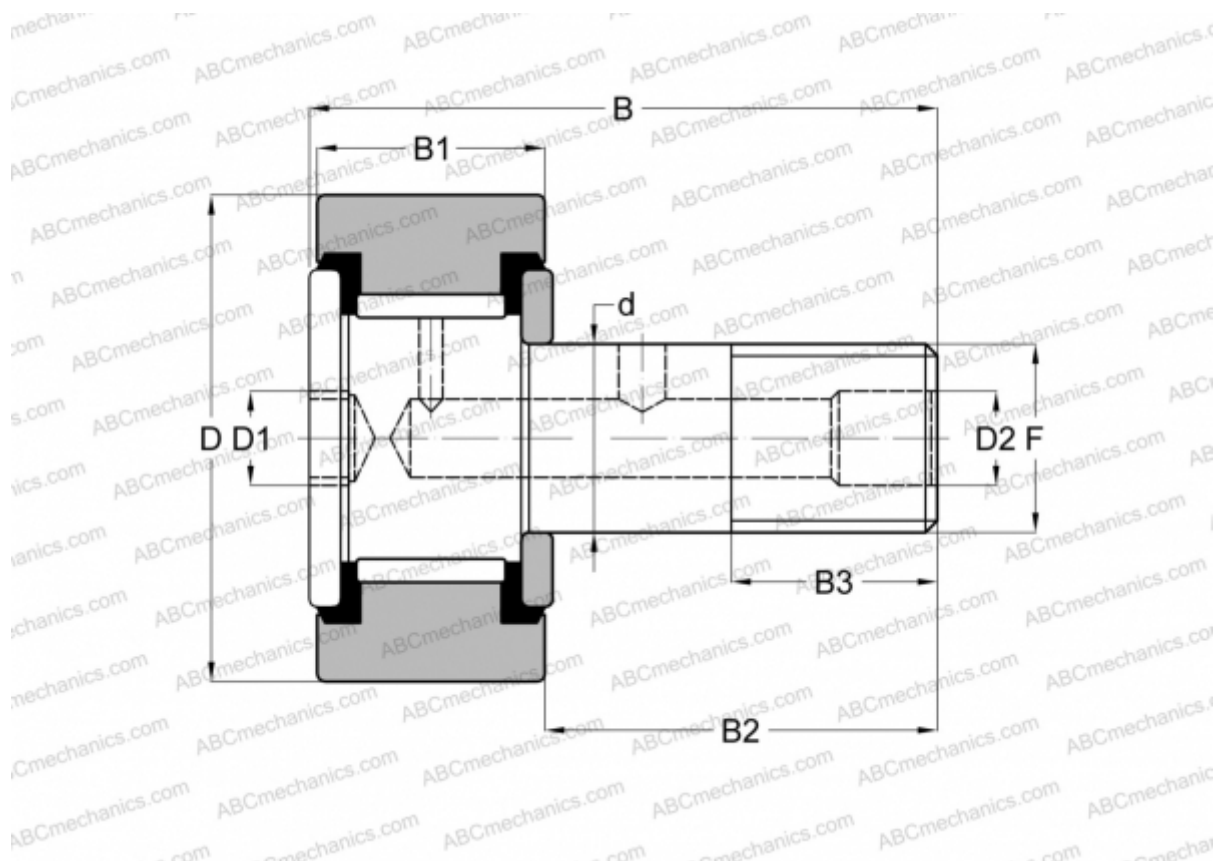


## CR-2 1/4 -XB SMITH BEARING

Cam followers

TYPE: Roller bearings, Stud type track rollers, Hex socket, contact seals on both side, cylindrical outer ring, inch size



### Technical specification

#### DIMENSIONS, MM

d	22,225
D	57,150
D1	11,113
D2	4,763
B	83,343
B1	31,750
B2	50,800
B3	25,400
F	7/8-14

#### INTERCHANGE

INA	<a href="#">CF 36 PP</a>
McGill	<a href="#">CF-2 1/4 -SB</a>
RBC	<a href="#">S 72 LW</a>
TORRINGTON	<a href="#">CRSB 36</a>

**WEIGHT, KG** 0,744

**MANUFACTURER** [SMITH BEARING](#)

#### INTERCHANGE

ABC	<a href="#">CRSB 36</a>
-----	-------------------------