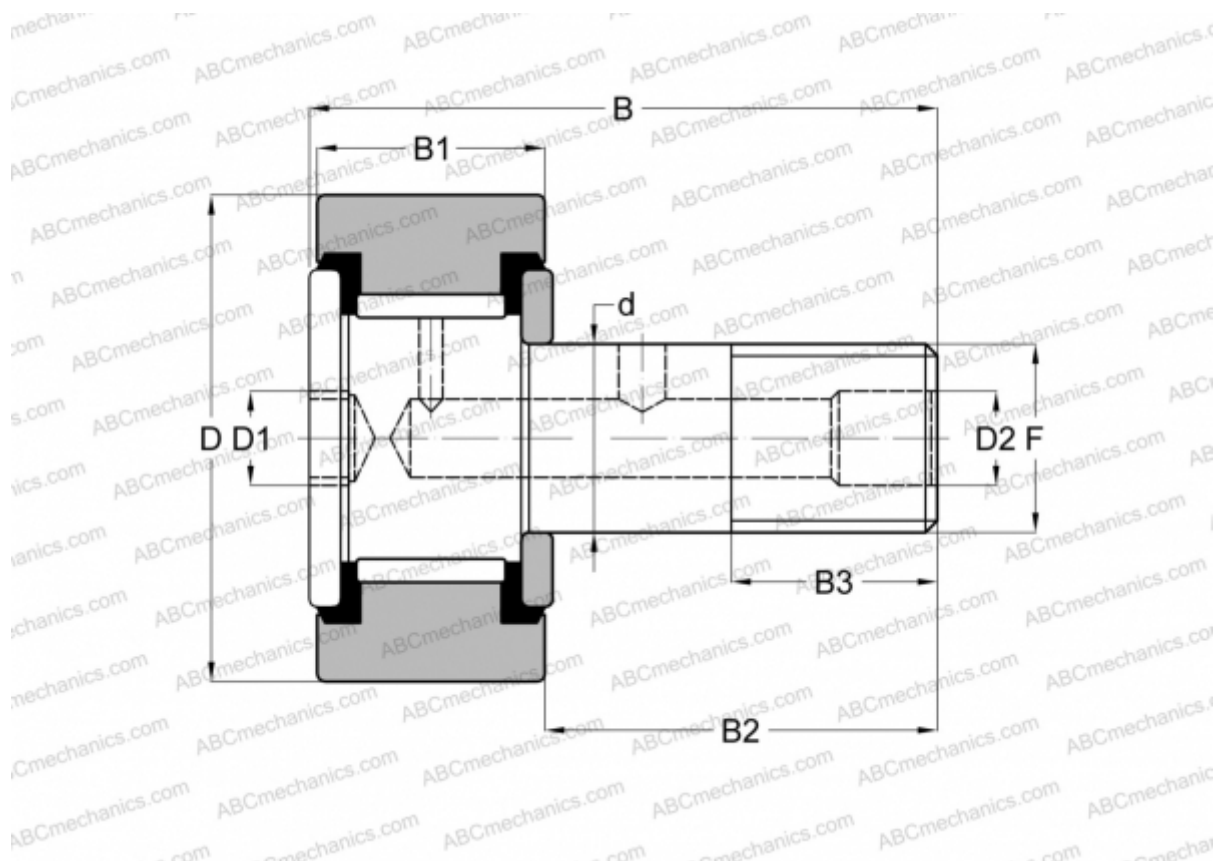


## CR-2 1/2 -XB SMITH BEARING

Cam followers

TYPE: Roller bearings, Stud type track rollers, Hex socket, contact seals on both side, cylindrical outer ring, inch size



### Technical specification

#### DIMENSIONS, MM

|    |        |
|----|--------|
| d  | 25,400 |
| D  | 63,500 |
| D1 | 12,700 |
| D2 | 4,763  |
| B  | 96,043 |
| B1 | 38,100 |
| B2 | 57,150 |
| B3 | 28,575 |
| F  | 1-14   |

#### INTERCHANGE

|            |                              |
|------------|------------------------------|
| INA        | <a href="#">CF 40 PP</a>     |
| McGill     | <a href="#">CF-2 1/2 -SB</a> |
| RBC        | <a href="#">S 80 LW</a>      |
| TORRINGTON | <a href="#">CRSB 40</a>      |

**WEIGHT, KG** 1,134

**MANUFACTURER** [SMITH BEARING](#)

#### INTERCHANGE

|     |                         |
|-----|-------------------------|
| ABC | <a href="#">CRSB 40</a> |
|-----|-------------------------|