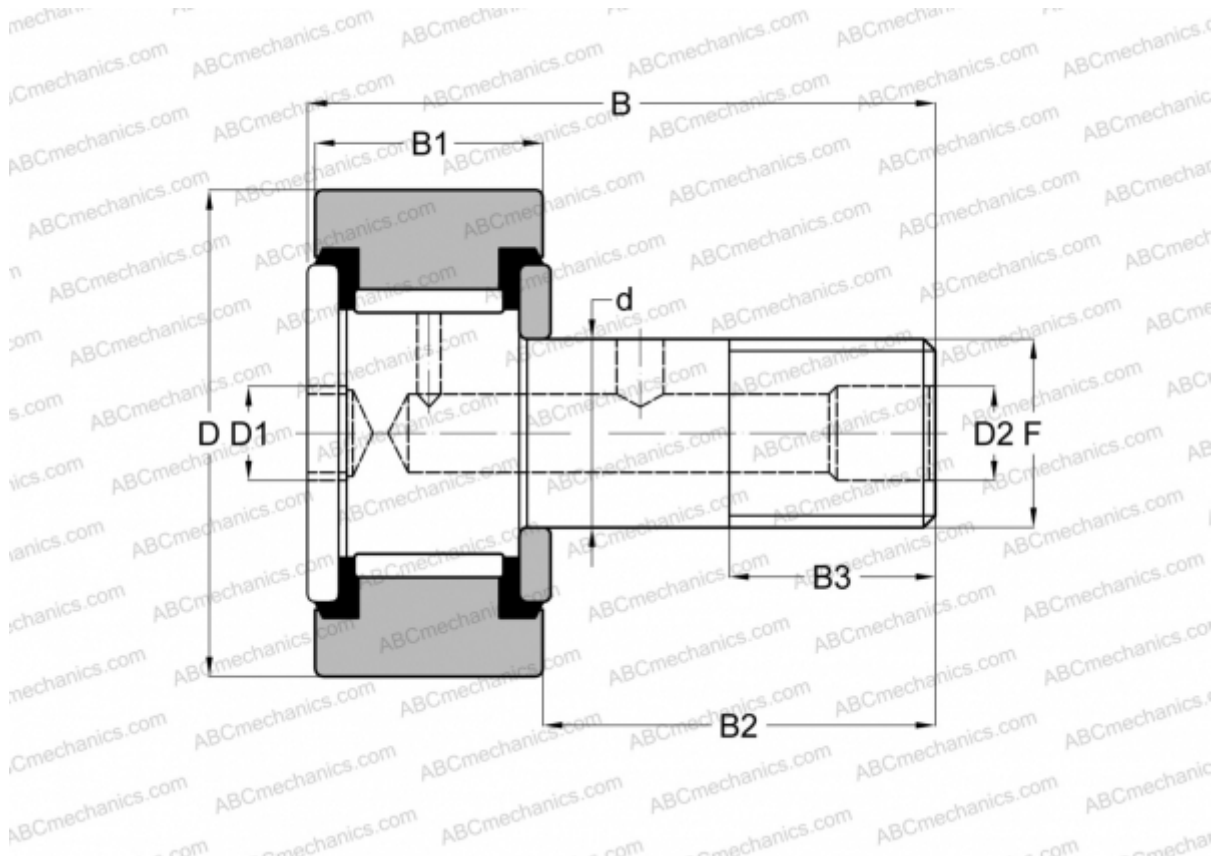


## CRSB 48 TORRINGTON

Cam followers

TYPE: Roller bearings, Stud type track rollers, Hex socket, contact seals on both side, cylindrical outer ring, inch size



### Technical specification

#### DIMENSIONS, MM

d	31,750
D	76,200
D1	15,875
D2	6,350
B	108,742
B1	44,450
B2	63,500
B3	31,750
F	1 1/4-12

**WEIGHT, KG** 1,932

**MANUFACTURER** [TORRINGTON](#)

#### INTERCHANGE

ABC	<a href="#">CRSB 48</a>
-----	-------------------------

#### INTERCHANGE

INA	<a href="#">CF 48 PP</a>
McGill	<a href="#">CF-3-SB</a>
RBC	<a href="#">S 96 LW</a>
SMITH BEARING	<a href="#">CR-3-XB</a>