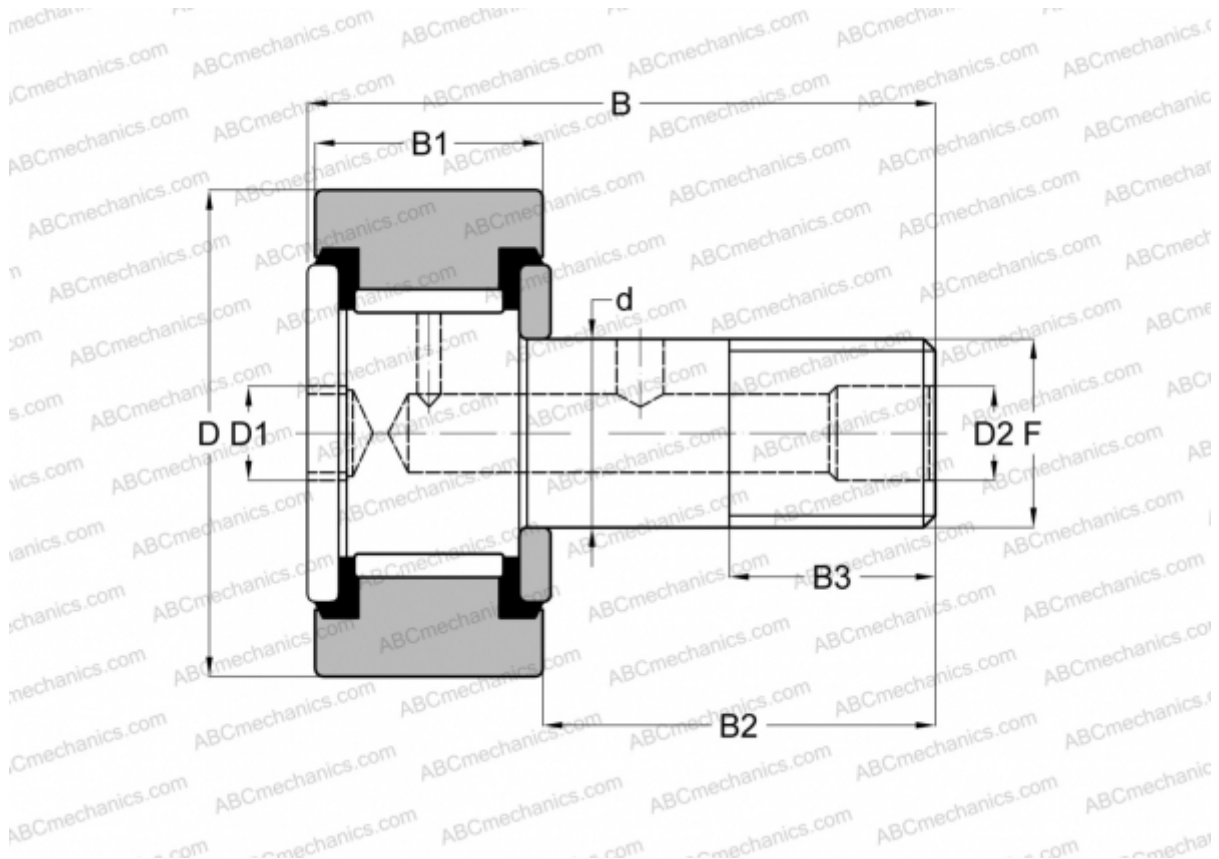


CR-3 1/2 -XB SMITH BEARING

Cam followers

TYPE: Roller bearings, Stud type track rollers, Hex socket, contact seals on both side, cylindrical outer ring, inch size



Technical specification

DIMENSIONS, MM

d	34,925
D	88,900
D1	19,050
D2	6,350
B	121,442
B1	50,800
B2	69,850
B3	34,925
F	1 3/8-12

WEIGHT, KG 2,912

MANUFACTURER [SMITH BEARING](#)

INTERCHANGE

ABC [CRSB 56](#)

INTERCHANGE

INA	CF 56 PP
McGill	CF-3 1/2 -SB
RBC	S 112 LW
TORRINGTON	CRSB 56