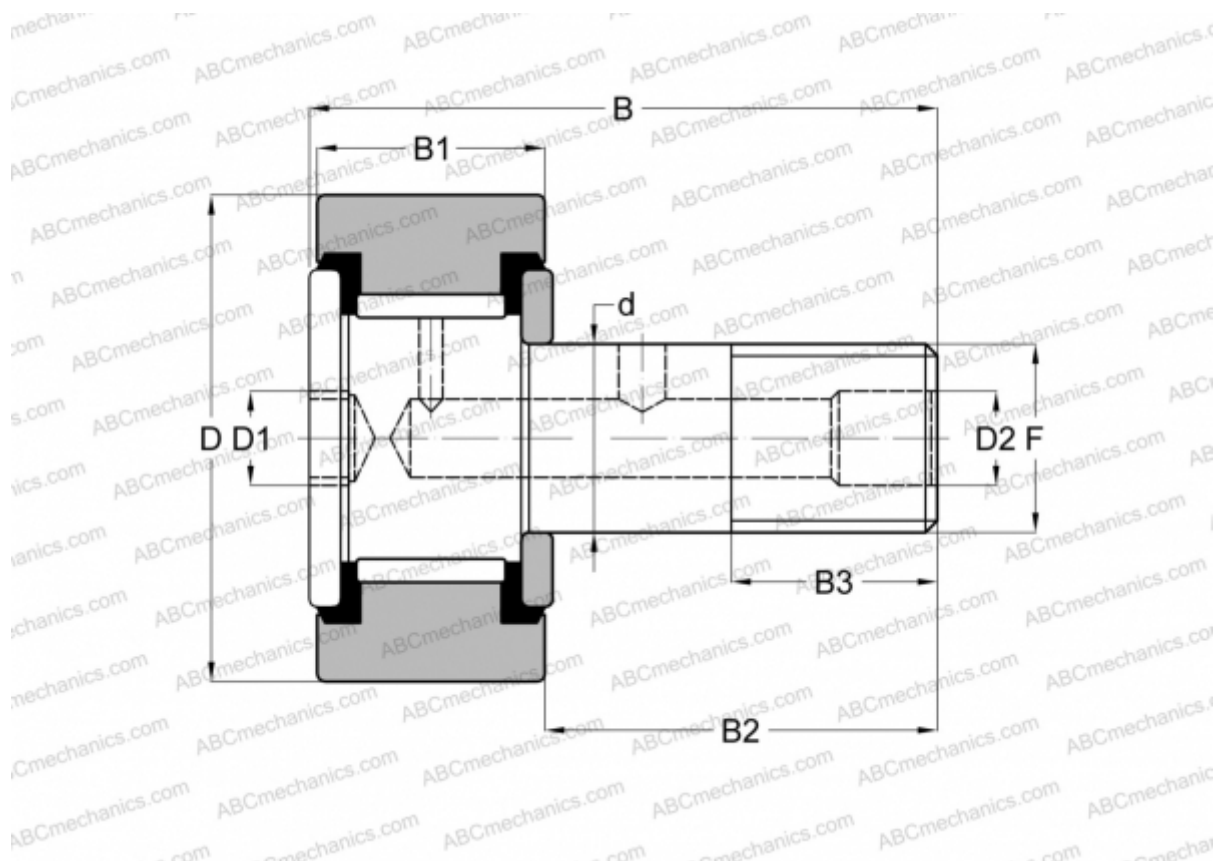


CRSB 80 TORRINGTON

Cam followers

TYPE: Roller bearings, Stud type track rollers, Hex socket, contact seals on both side, cylindrical outer ring, inch size



Technical specification

DIMENSIONS, MM

d	50,800
D	127,000
D1	22,225
D2	6,350
B	200,000
B1	69,850
B2	128,575
B3	65,075
F	2-12

INTERCHANGE

McGill	CF-5-SB
RBC	S 160 LW
SMITH BEARING	CR-5-XB

WEIGHT, KG 8,709

MANUFACTURER [TORRINGTON](#)

INTERCHANGE

ABC	CRSB 80
-----	-------------------------