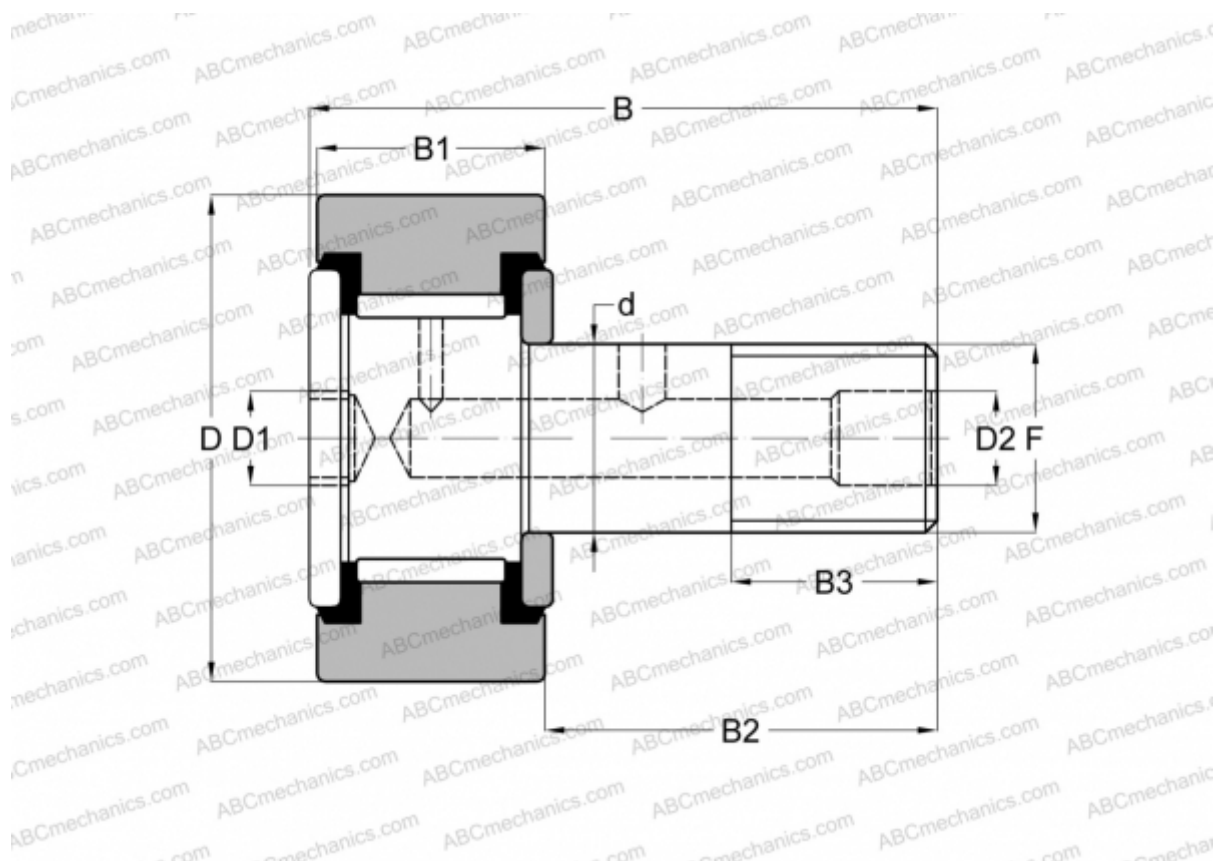


CR-6-XB SMITH BEARING

Cam followers

TYPE: Roller bearings, Stud type track rollers, Hex socket, contact seals on both side, cylindrical outer ring, inch size



Technical specification

DIMENSIONS, MM

d	63,500
D	152,400
D1	25,400
D2	6,350
B	236,538
B1	82,550
B2	152,400
B3	76,200
F	2 1/2-12

INTERCHANGE

McGill	CF-6-SB
RBC	S 192 LW
TORRINGTON	CRSB 96

WEIGHT, KG 15,059

MANUFACTURER [SMITH BEARING](#)

INTERCHANGE

ABC	CRSB 96
-----	-------------------------