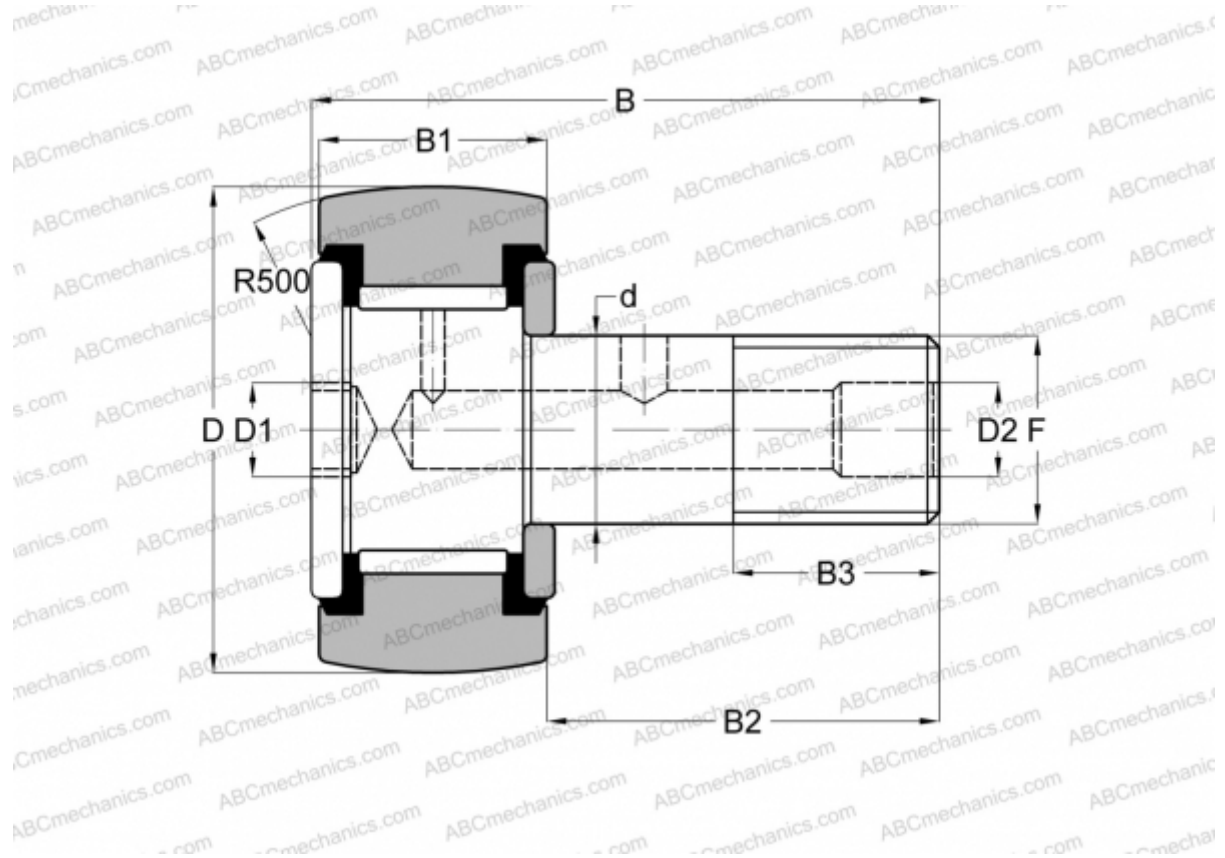


## CRSBC 22 TORRINGTON

Cam followers

TYPE: Roller bearings, Stud type track rollers, Hex socket, contact seals on both side, inch size



### Technical specification

#### DIMENSIONS, MM

d	12,700
D	34,925
D1	6,350
D2	4,763
B	51,593
B1	19,050
B2	31,750
B3	15,875
F	1/2-20

**WEIGHT, KG** 0,159

**MANUFACTURER** [TORRINGTON](#)

#### INTERCHANGE

ABC [CRSBC 22](#)

#### INTERCHANGE

INA	<a href="#">CF 22 PPY</a>
McGill	<a href="#">CCF-1 3/8 -SB</a>
RBC	<a href="#">CS 44 LW</a>
SMITH BEARING	<a href="#">CR-1 3/8 -XBC</a>