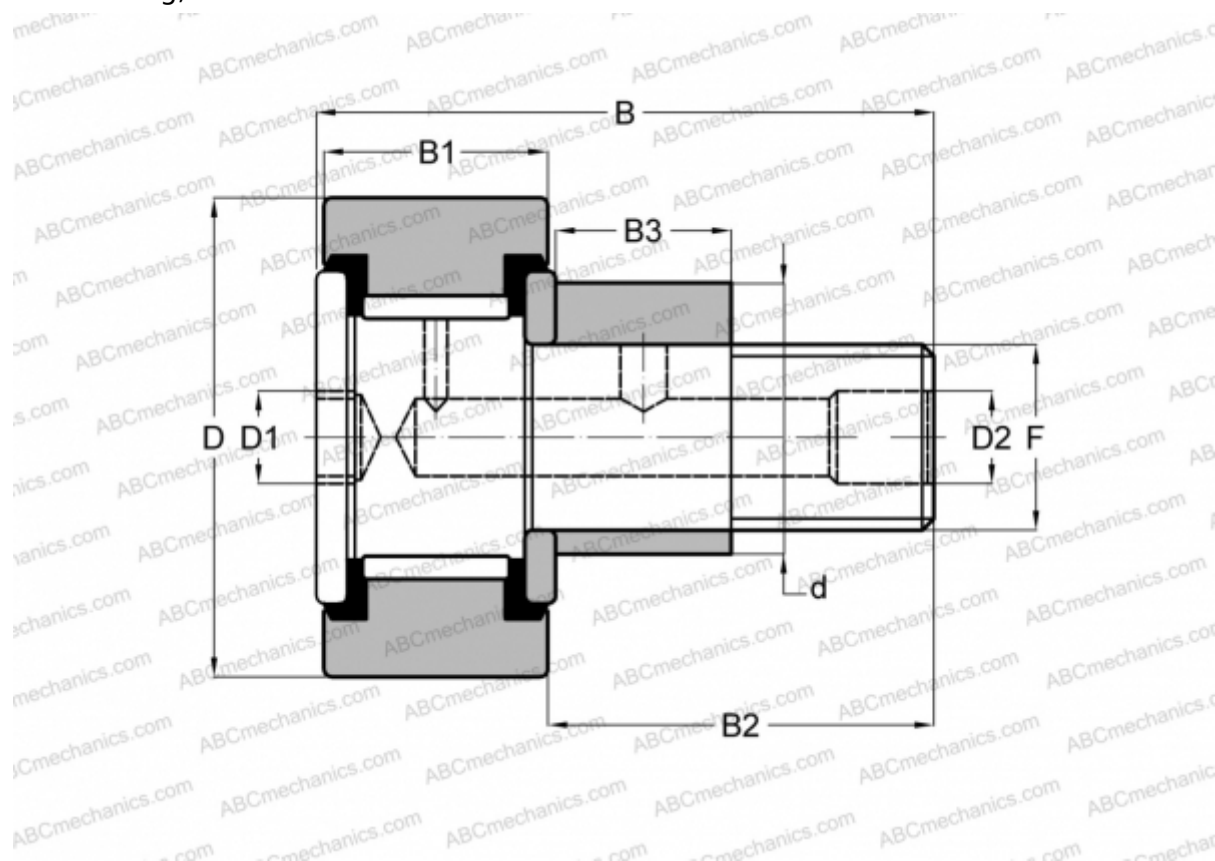


## CR 3/4 XBE SMITH BEARING

Cam followers

TYPE: Roller bearings, Stud type track rollers, Eccentric stud, hex socket, contact seals on both side, cylindrical outer ring, inch size



### Technical specification

#### DIMENSIONS, MM

d	12,700
D	19,050
D1	4,763
D2	4,763
B	35,718
B1	12,700
B2	22,225
B3	12,700
F	3/8-24

#### INTERCHANGE

INA	<a href="#">CFE 12 PP</a>
McGill	<a href="#">CFE 3/4 SB</a>
RBC	<a href="#">S 24 LWX</a>

**WEIGHT, KG** 0,036

**MANUFACTURER** [SMITH BEARING](#)

#### INTERCHANGE

TORRINGTON [CRSBE 12](#)