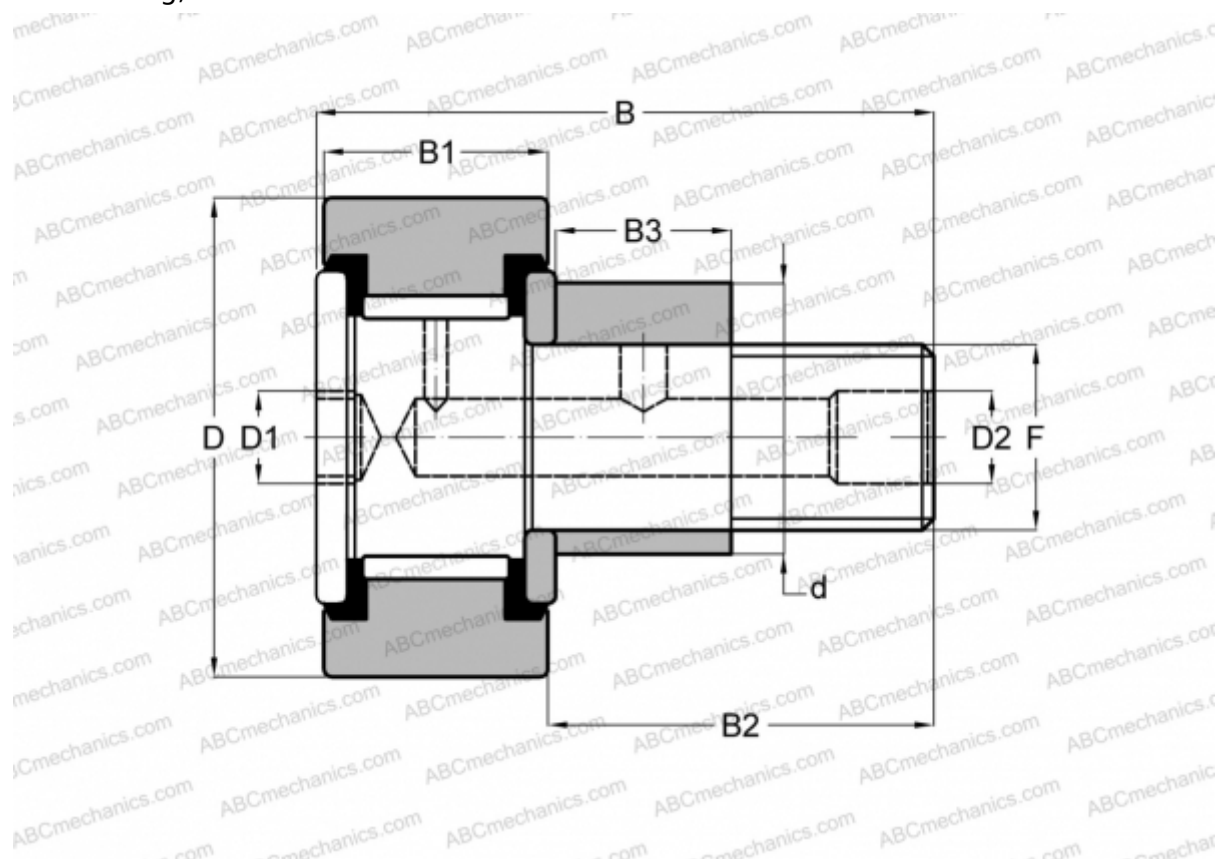


CR 7/8 XBE SMITH BEARING

Cam followers

TYPE: Roller bearings, Stud type track rollers, Eccentric stud, hex socket, contact seals on both side, cylindrical outer ring, inch size



Technical specification

DIMENSIONS, MM

d	12,700
D	22,225
D1	4,763
D2	4,763
B	35,718
B1	12,700
B2	22,225
B3	12,700
F	3/8 - 24

INTERCHANGE

INA	CFE 14 PP
McGill	CFE 7/8 SB
RBC	S 28 LWX

WEIGHT, KG 0,050

MANUFACTURER [SMITH BEARING](#)

INTERCHANGE

TORRINGTON [CRSBE 14](#)