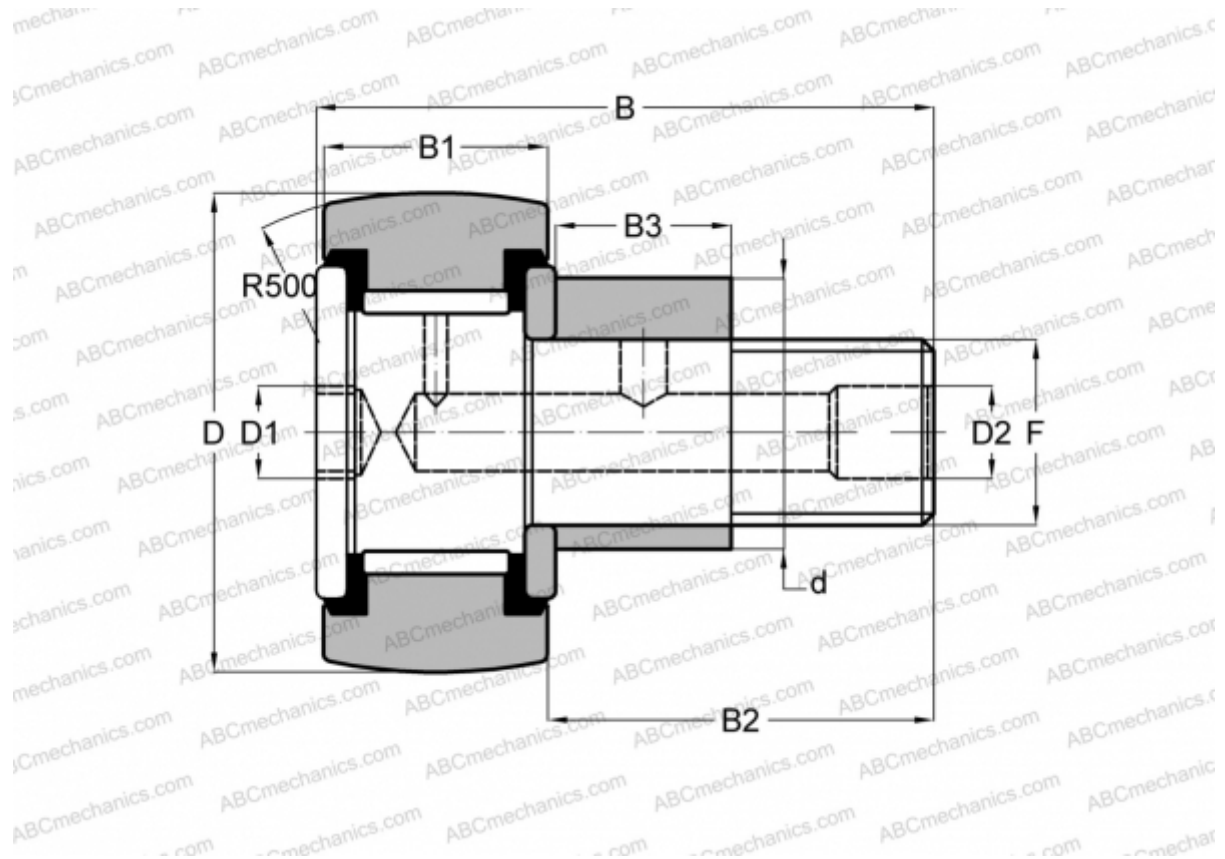


## CFE 30 PPY INA

Cam followers

TYPE: Roller bearings, Stud type track rollers, Eccentric stud, hex socket, contact seals on both side, inch size



### Technical specification

#### DIMENSIONS, MM

d	25,400
D	47,625
D1	7,938
D2	4,763
B	70,643
B1	25,400
B2	44,450
B3	22,225
T	22,225
F	3/4-16

**WEIGHT, KG** 0,449

**MANUFACTURER** [INA](#)

#### INTERCHANGE

TORRINGTON	<a href="#">CRSBCE 30</a>
McGill	<a href="#">CCFE-1 7/8 -SB</a>
RBC	<a href="#">CS 60 LWX</a>
SMITH BEARING	<a href="#">CR-1 7/8 -XBCE</a>