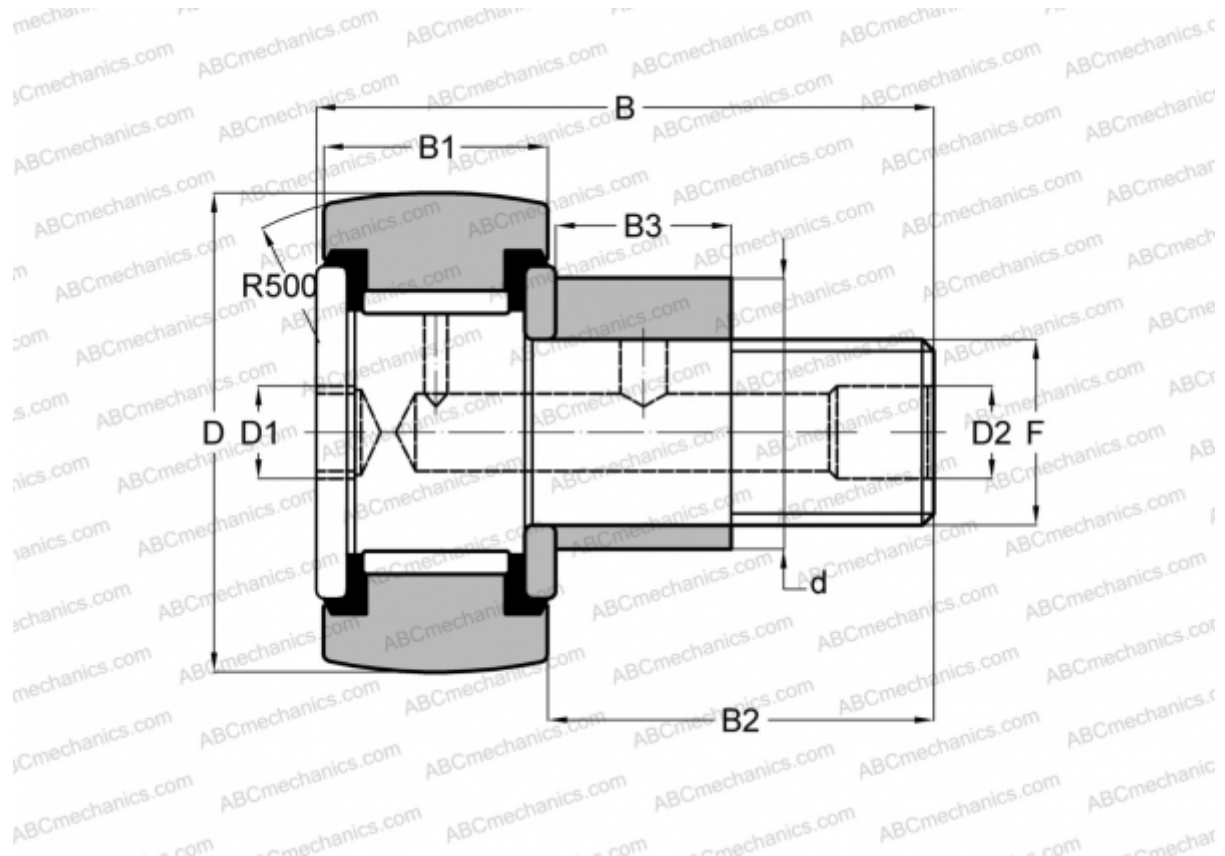


## CRSBCE 36 TORRINGTON

Cam followers

TYPE: Roller bearings, Stud type track rollers, Eccentric stud, hex socket, contact seals on both side, inch size



### Technical specification

#### DIMENSIONS, MM

d	30,163
D	57,150
D1	7,938
D2	4,763
B	83,343
B1	31,750
B2	50,800
B3	25,400
T	25,400
F	7/8-14

**WEIGHT, KG** 0,771

**MANUFACTURER** [TORRINGTON](#)

#### INTERCHANGE

INA	<a href="#">CFE 36 PPY</a>
McGill	<a href="#">CCFE-2 1/4 -SB</a>
RBC	<a href="#">CS 72 LWX</a>
SMITH BEARING	<a href="#">CR-2 1/4 -XBCE</a>