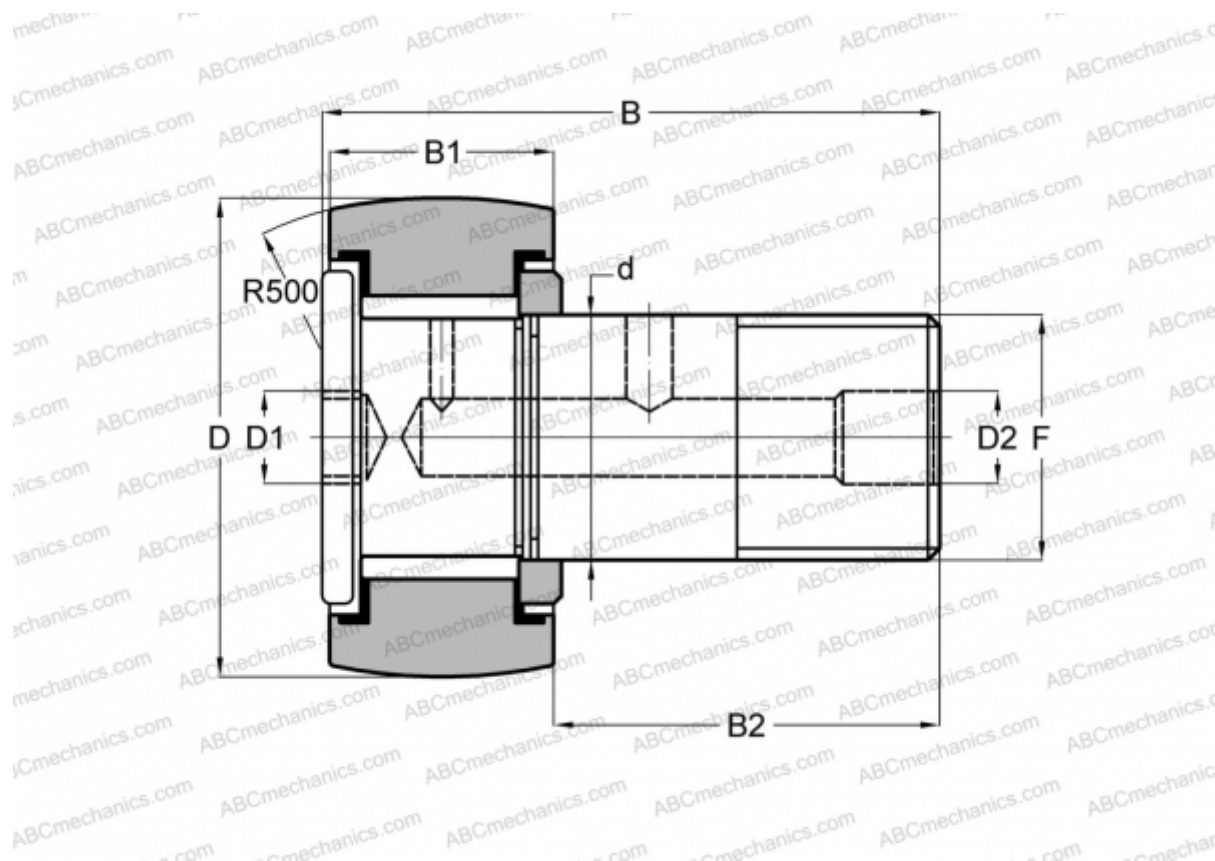




## HR 5/8 XBC SMITH BEARING

Cam followers

TYPE: Roller bearings, Stud type track rollers, Heavy duty stud, hex socket, contact seals on both side, inch size



### Technical specification

#### DIMENSIONS, MM

d	7,925
D	15,875
D1	3,175
B	30,955
B1	11,113
B2	19,050
F	5/16-24

**WEIGHT, KG** 0,027

**MANUFACTURER** [SMITH BEARING](#)

#### INTERCHANGE

TORRINGTON	<a href="#">CRHSBC 10-1</a>
McGill	<a href="#">CCFH 5/8 SB</a>
RBC	<a href="#">CH 20 LW</a>

