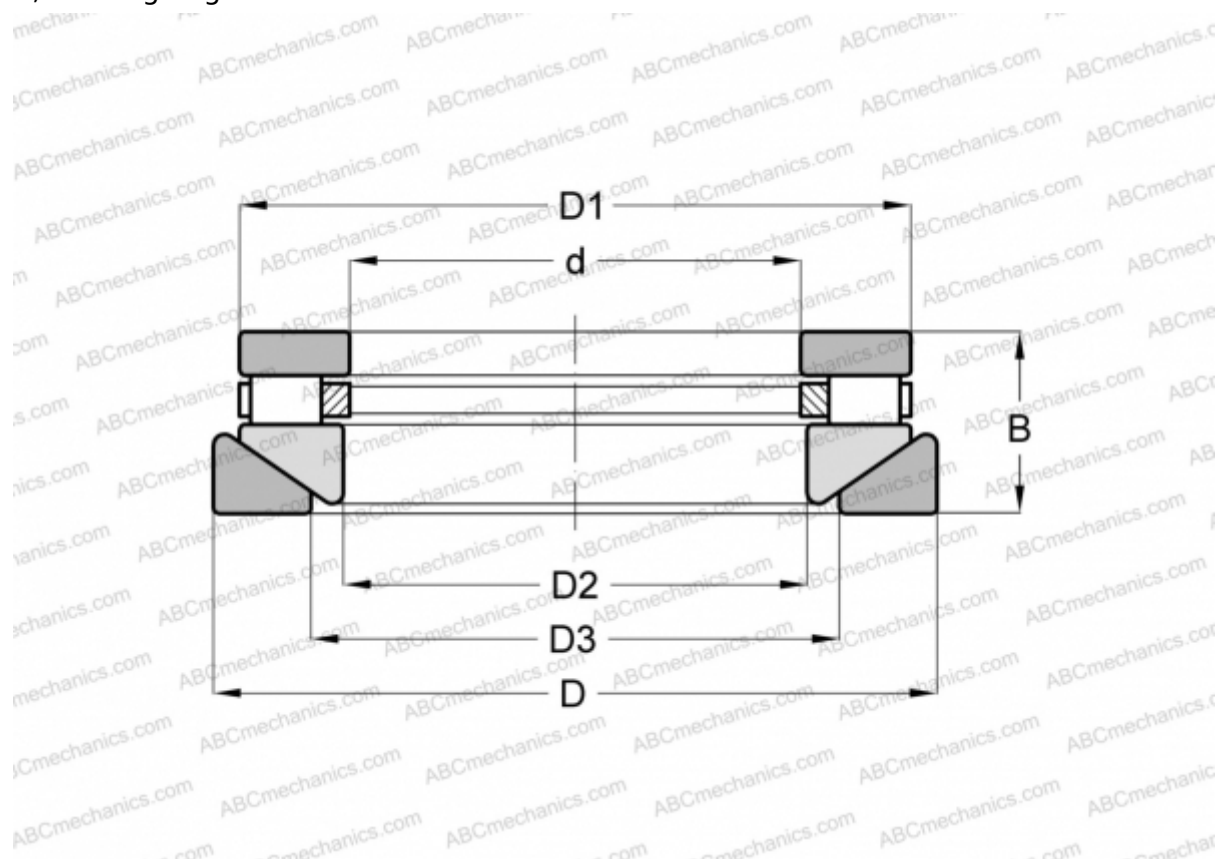


## RTWM-605 ANDREWS

Cylindrical roller thrust bearings

TYPE: Roller bearings, Thrust roller bearing, Cylindrical, Single direction, separable, cylindrical rollers, inch sizes, self-aligning



### Technical specification

#### DIMENSIONS, MM

d	31,750
D	63,500
D1	58,738
D2	34,925
D3	38,100
B	26,988

**WEIGHT, KG** 0,363

**MANUFACTURER** [ANDREWS](#)

#### INTERCHANGE

ROLLWAY	<a href="#">AT-605</a>
INA	<a href="#">RTW-605</a>