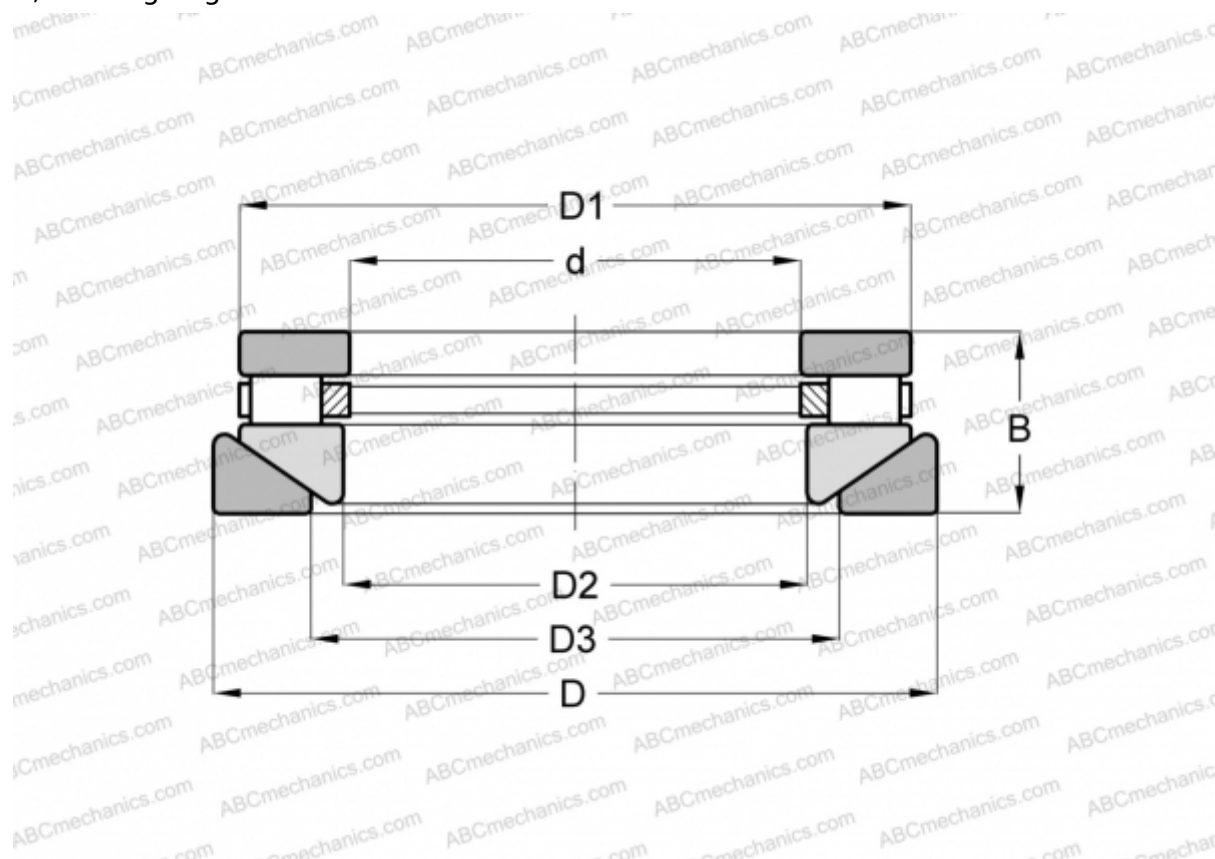


AT-614 ROLLWAY

Cylindrical roller thrust bearings

TYPE: Roller bearings, Thrust roller bearing, Cylindrical, Single direction, separable, cylindrical rollers, inch sizes, self-aligning



Technical specification

DIMENSIONS, MM

d	46,038
D	88,900
D1	83,820
D2	47,625
D3	52,388
B	33,338

WEIGHT, KG 0,907

MANUFACTURER [ROLLWAY](#)

INTERCHANGE

ANDREWS	RTWM-614
INA	RTW-614