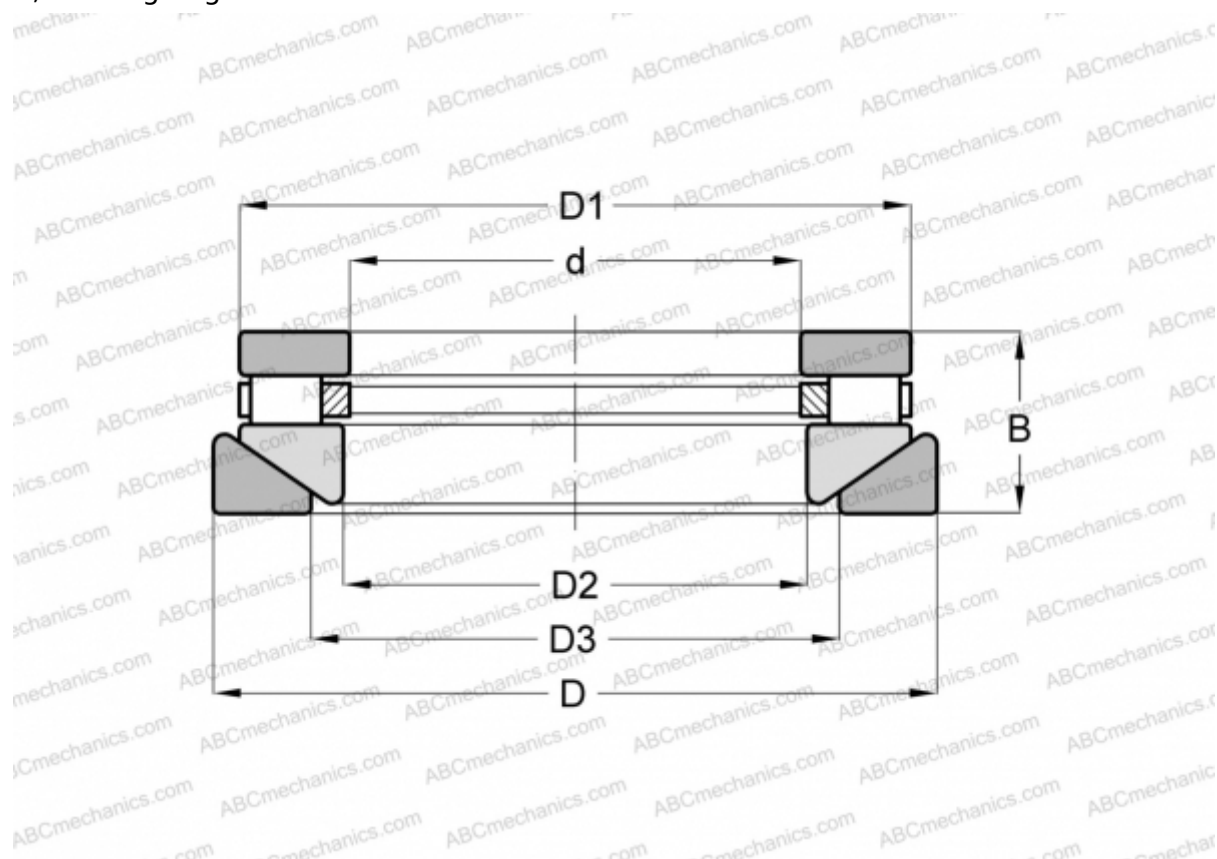


AT-617 ROLLWAY

Cylindrical roller thrust bearings

TYPE: Roller bearings, Thrust roller bearing, Cylindrical, Single direction, separable, cylindrical rollers, inch sizes, self-aligning



Technical specification

DIMENSIONS, MM

d	50,800
D	95,250
D1	89,296
D2	52,388
D3	61,913
B	33,338

WEIGHT, KG 1,043

MANUFACTURER [ROLLWAY](#)

INTERCHANGE

ANDREWS	RTWM-617
INA	RTW-617