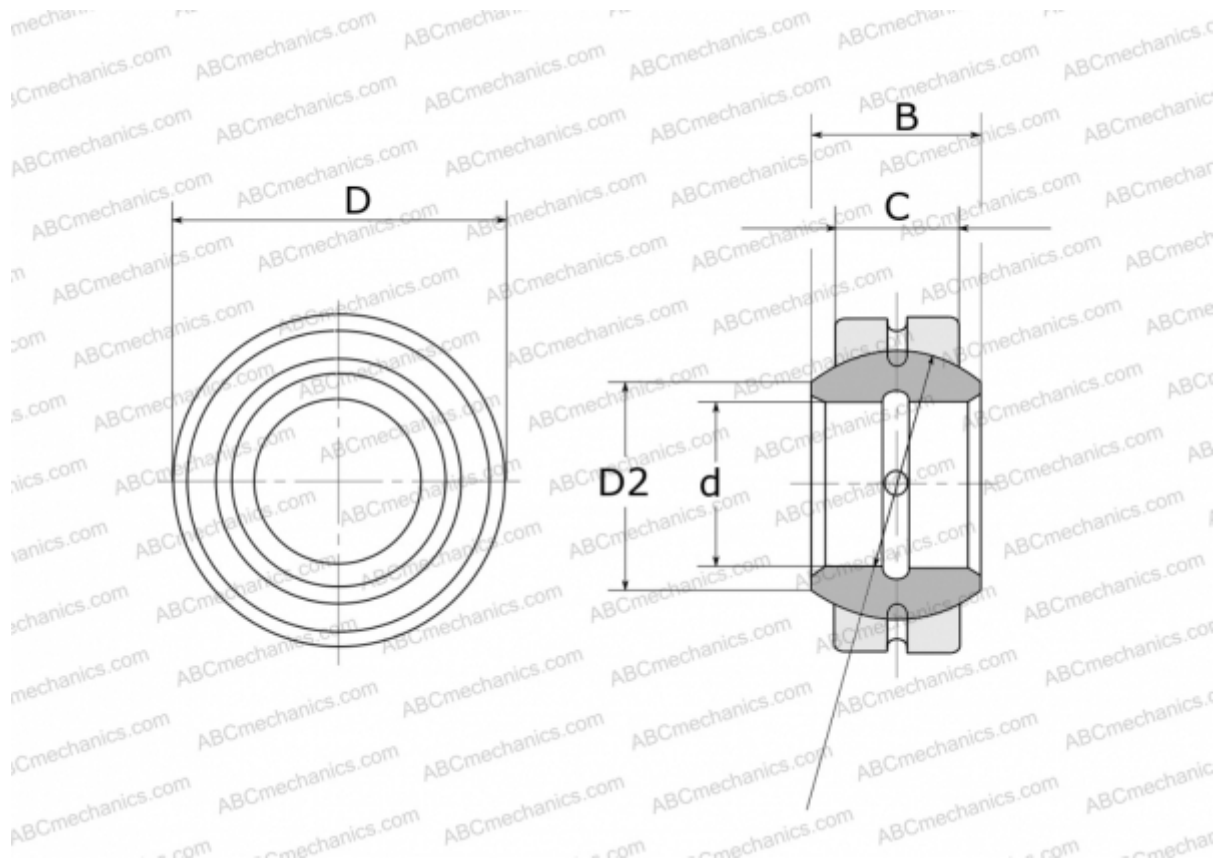


GE 25 E FLURO

Spherical plain bearings

TYPE: Plain bearings, Spherical plain bearings and rod ends, Radial spherical plain bearings, Requiring maintenance, Series GE..E (FLURO)



Technical specification

DIMENSIONS, MM

d	25,000
D	42,000
D2	29,300
B	20,000
f	35,500
C	16,000

WEIGHT, KG 0,115

MANUFACTURER [FLURO](#)