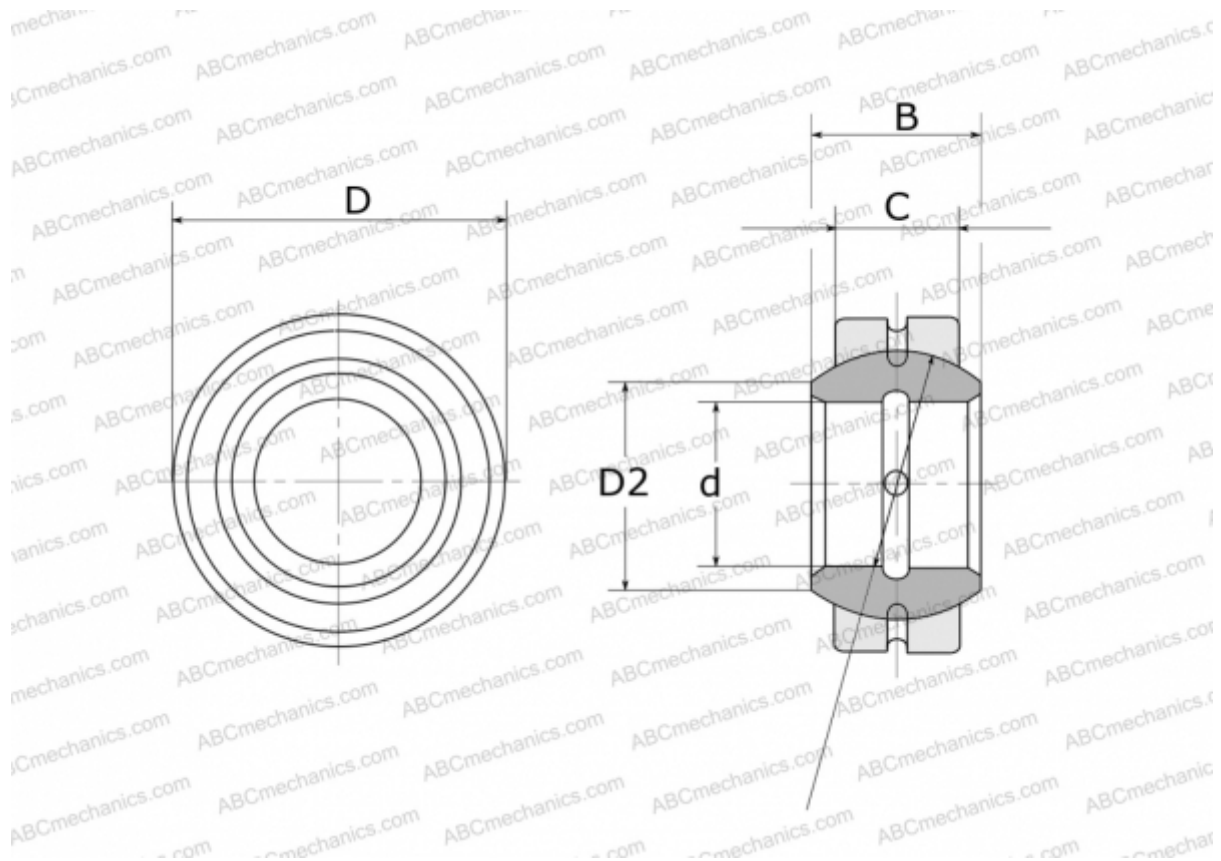


GE 40 E FLURO

Spherical plain bearings

TYPE: Plain bearings, Spherical plain bearings and rod ends, Radial spherical plain bearings, Requiring maintenance, Series GE..E (FLURO)



Technical specification

DIMENSIONS, MM

| | |
|----|--------|
| d | 40,000 |
| D | 62,000 |
| D2 | 45,000 |
| B | 28,000 |
| f | 53,000 |
| C | 22,000 |

WEIGHT, KG 0,318

MANUFACTURER [FLURO](#)