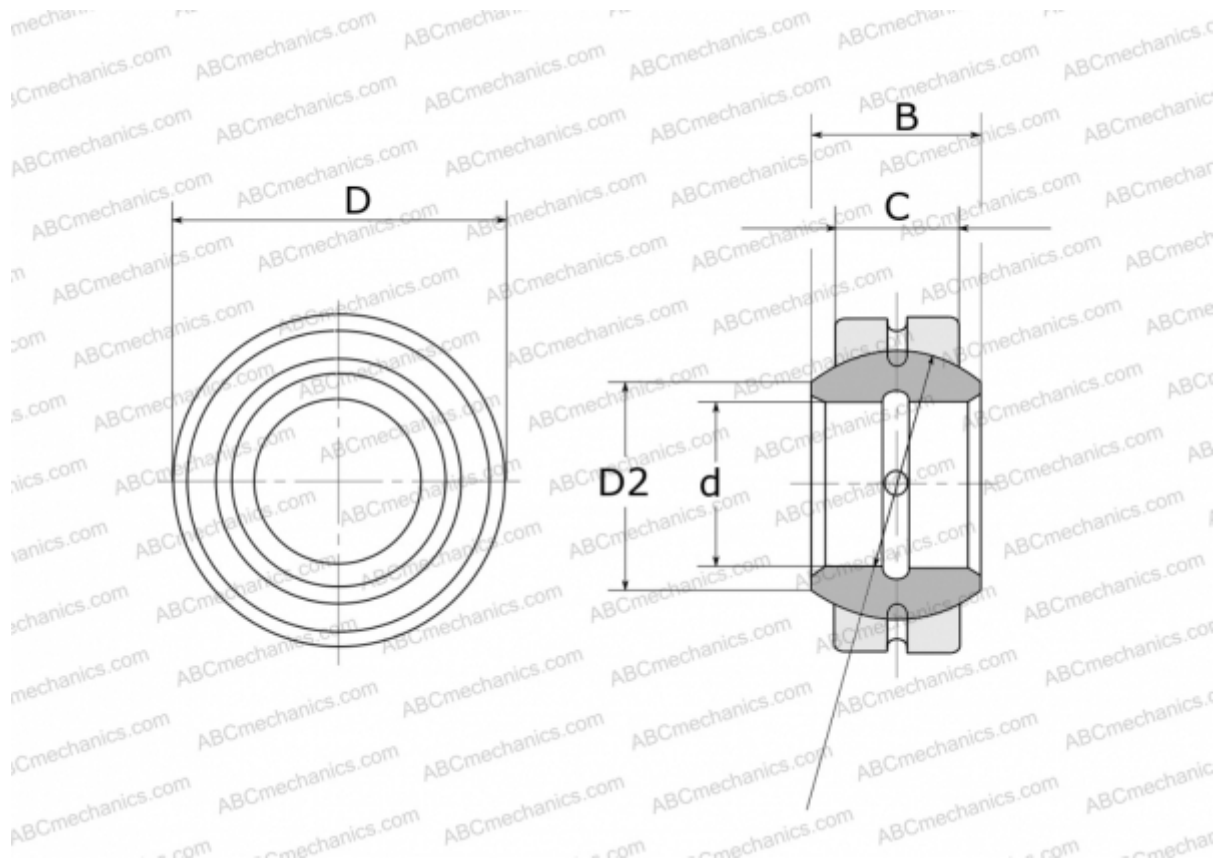


GE 110 E FLURO

Spherical plain bearings

TYPE: Plain bearings, Spherical plain bearings and rod ends, Radial spherical plain bearings, Requiring maintenance, Series GE..E (FLURO)



Technical specification

DIMENSIONS, MM

d	110,000
D	160,000
D2	121,200
B	70,000
f	140,000
C	55,000

WEIGHT, KG 4,830

MANUFACTURER [FLURO](#)