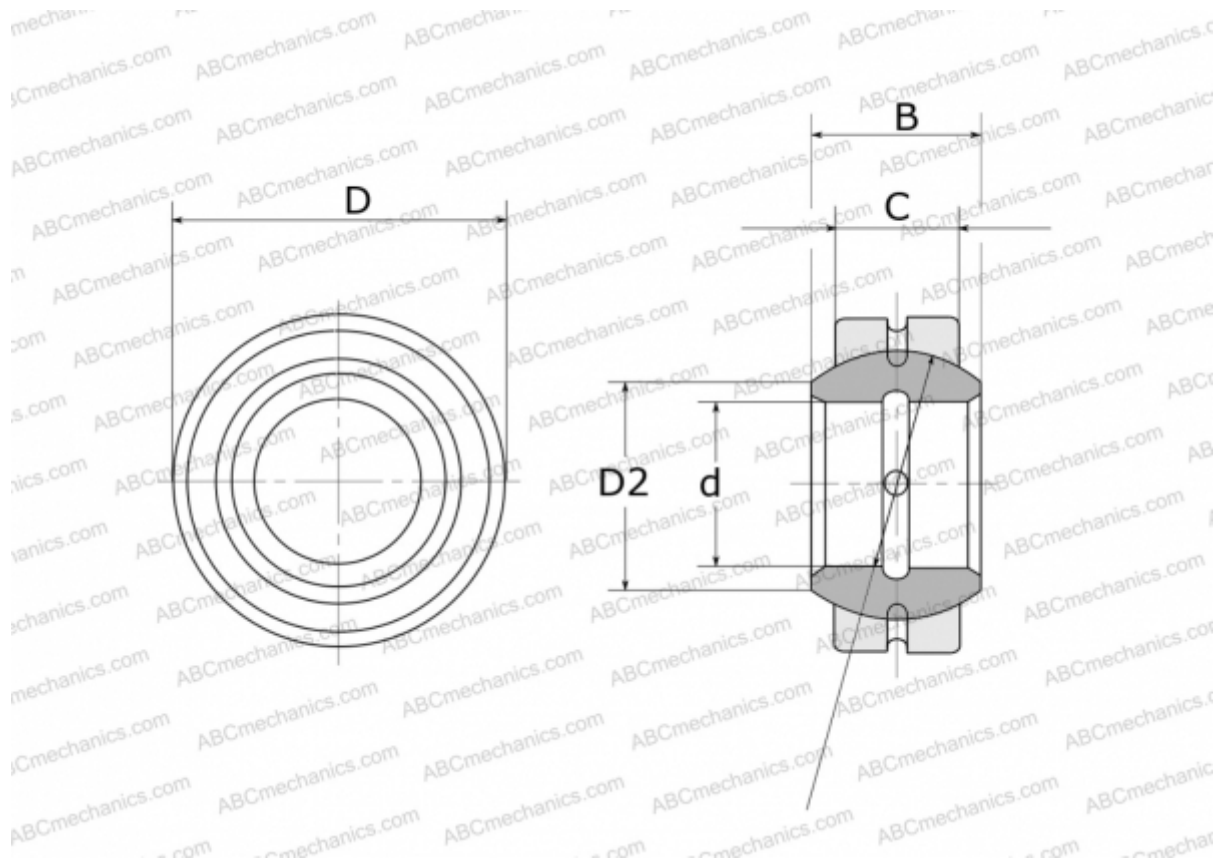


GE 120 E FLURO

Spherical plain bearings

TYPE: Plain bearings, Spherical plain bearings and rod ends, Radial spherical plain bearings, Requiring maintenance, Series GE..E (FLURO)



Technical specification

DIMENSIONS, MM

d	120,000
D	180,000
D2	135,500
B	85,000
f	160,000
C	70,000

WEIGHT, KG 8,110

MANUFACTURER [FLURO](#)