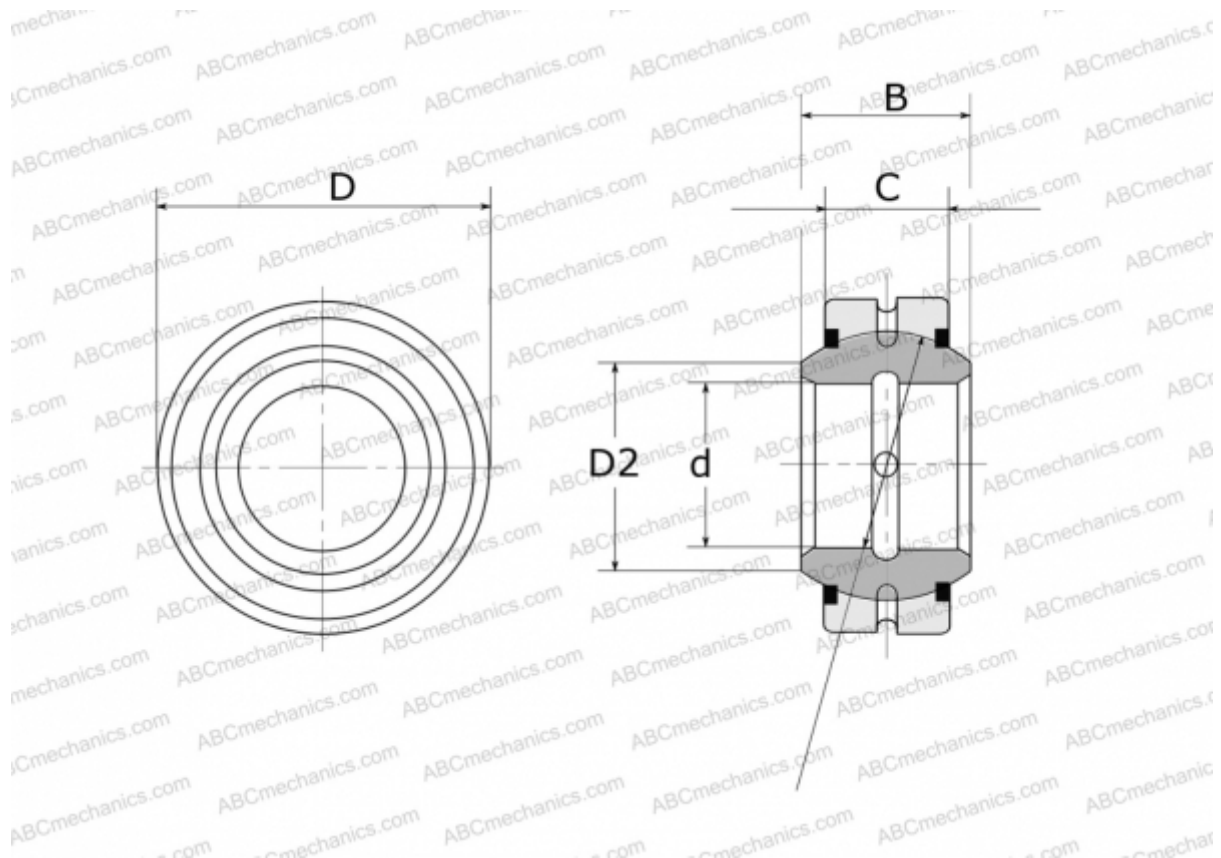


GE 16 E-2RS FLURO

Spherical plain bearings

TYPE: Plain bearings, Spherical plain bearings and rod ends, Radial spherical plain bearings, Requiring maintenance, Series GE..E-2RS (FLURO)



Technical specification

DIMENSIONS, MM

d	16,000
D	30,000
D2	20,700
B	14,000
f	25,000
C	10,000

WEIGHT, KG 0,040

MANUFACTURER [FLURO](#)