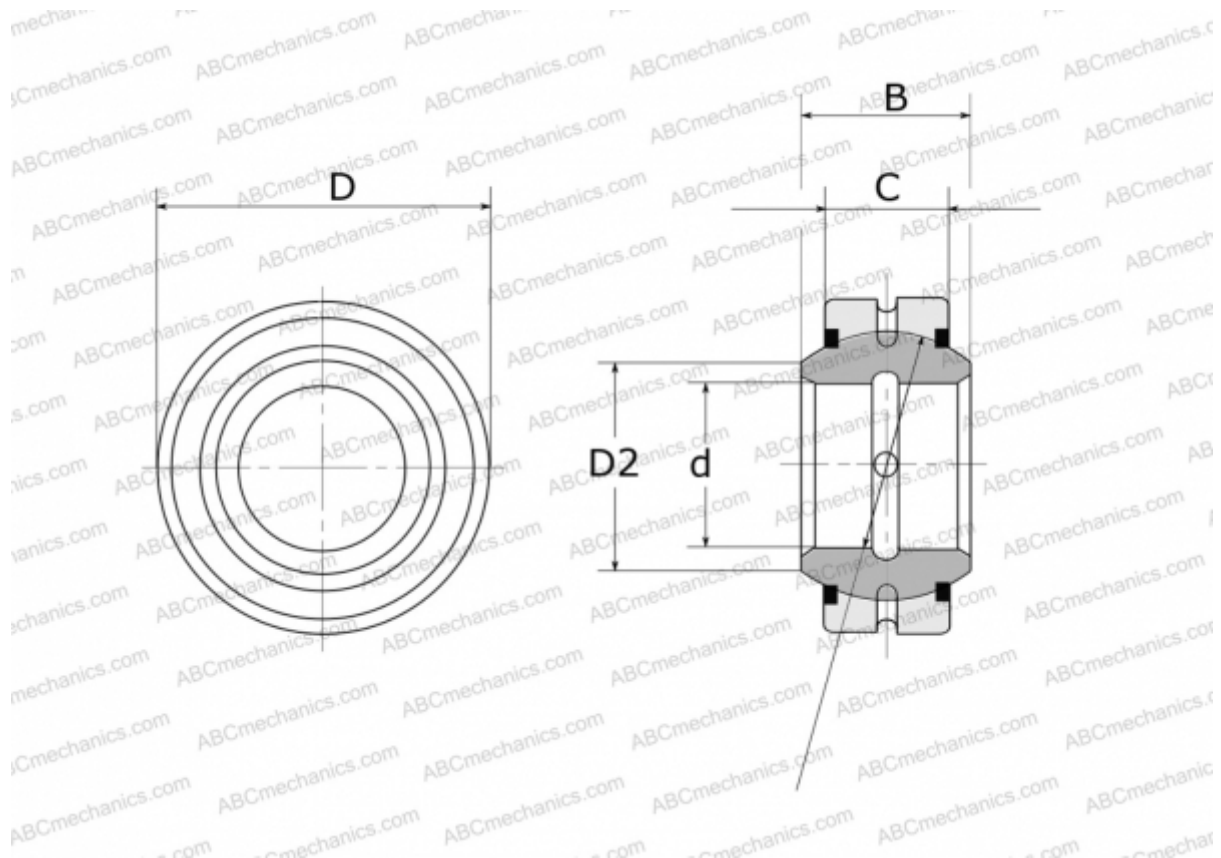


GE 55 E-2RS FLURO

Spherical plain bearings

TYPE: Plain bearings, Spherical plain bearings and rod ends, Radial spherical plain bearings, Requiring maintenance, Series GE..E-2RS (FLURO)



Technical specification

DIMENSIONS, MM

d	55,000
D	85,000
D2	62,300
B	40,000
f	74,000
C	32,000

WEIGHT, KG 0,864

MANUFACTURER [FLURO](#)