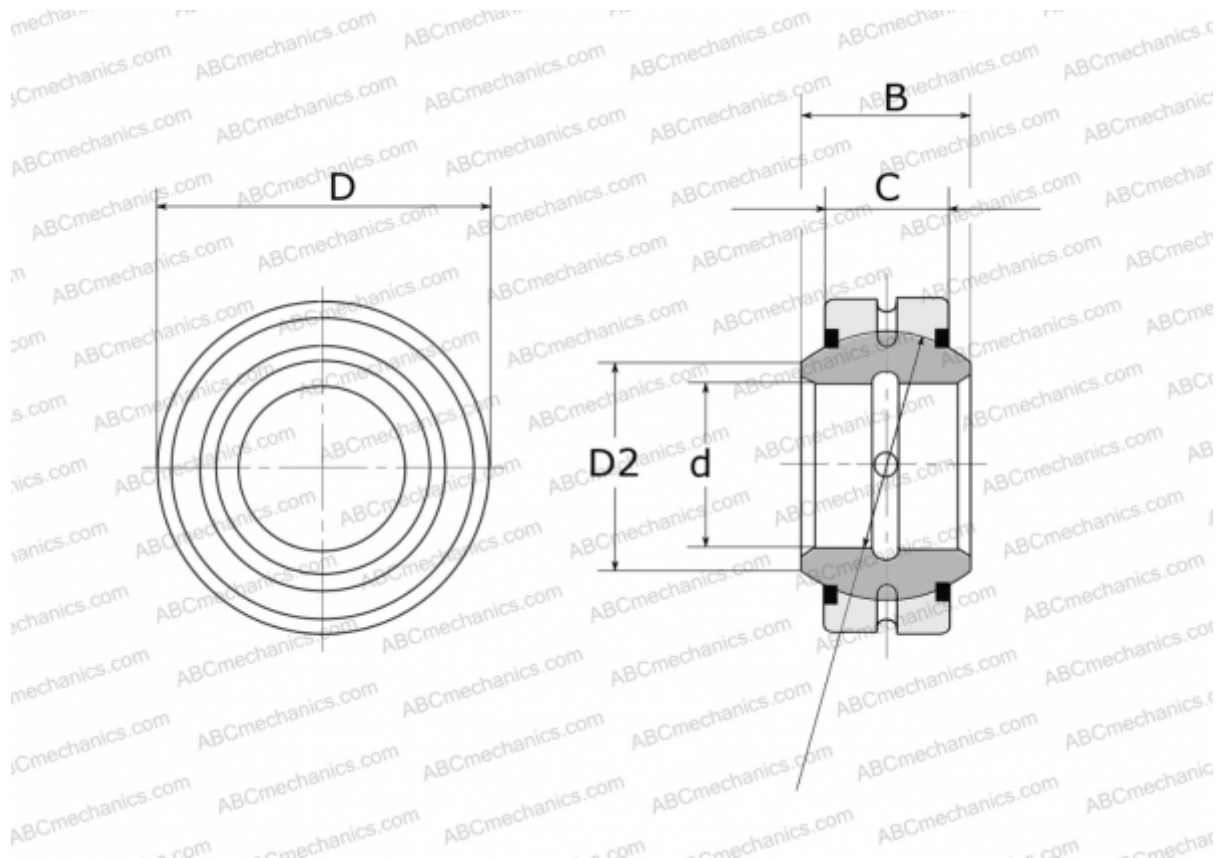


GE 80 E-2RS FLURO

Spherical plain bearings

TYPE: Plain bearings, Spherical plain bearings and rod ends, Radial spherical plain bearings, Requiring maintenance, Series GE..E-2RS (FLURO)



Technical specification

DIMENSIONS, MM

d	80,000
D	120,000
D2	89,400
B	55,000
f	105,000
C	45,000

WEIGHT, KG 2,320

MANUFACTURER [FLURO](#)