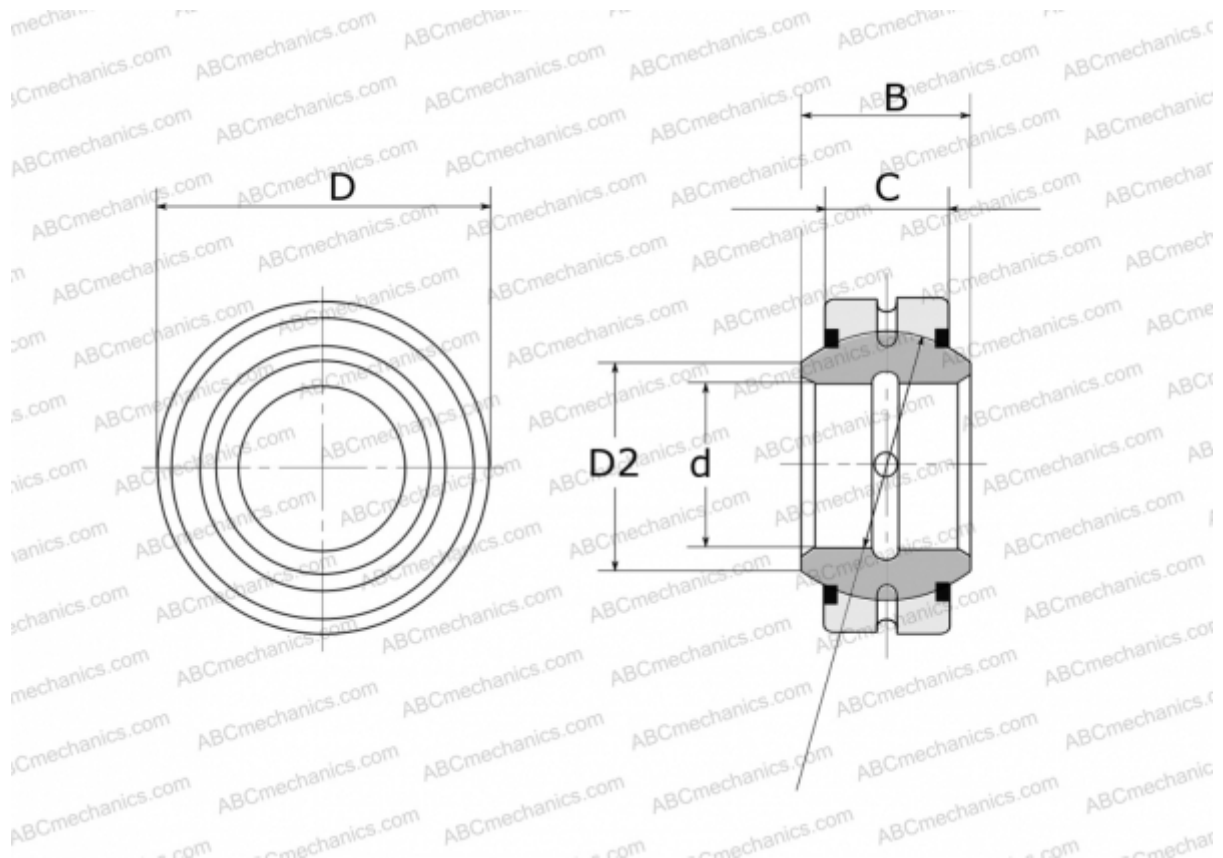


## GE 120 E-2RS FLURO

Spherical plain bearings

TYPE: Plain bearings, Spherical plain bearings and rod ends, Radial spherical plain bearings, Requiring maintenance, Series GE..E-2RS (FLURO)



### Technical specification

#### DIMENSIONS, MM

d	120,000
D	180,000
D2	135,500
B	85,000
f	160,000
C	70,000

**WEIGHT, KG** 8,110

**MANUFACTURER** [FLURO](#)