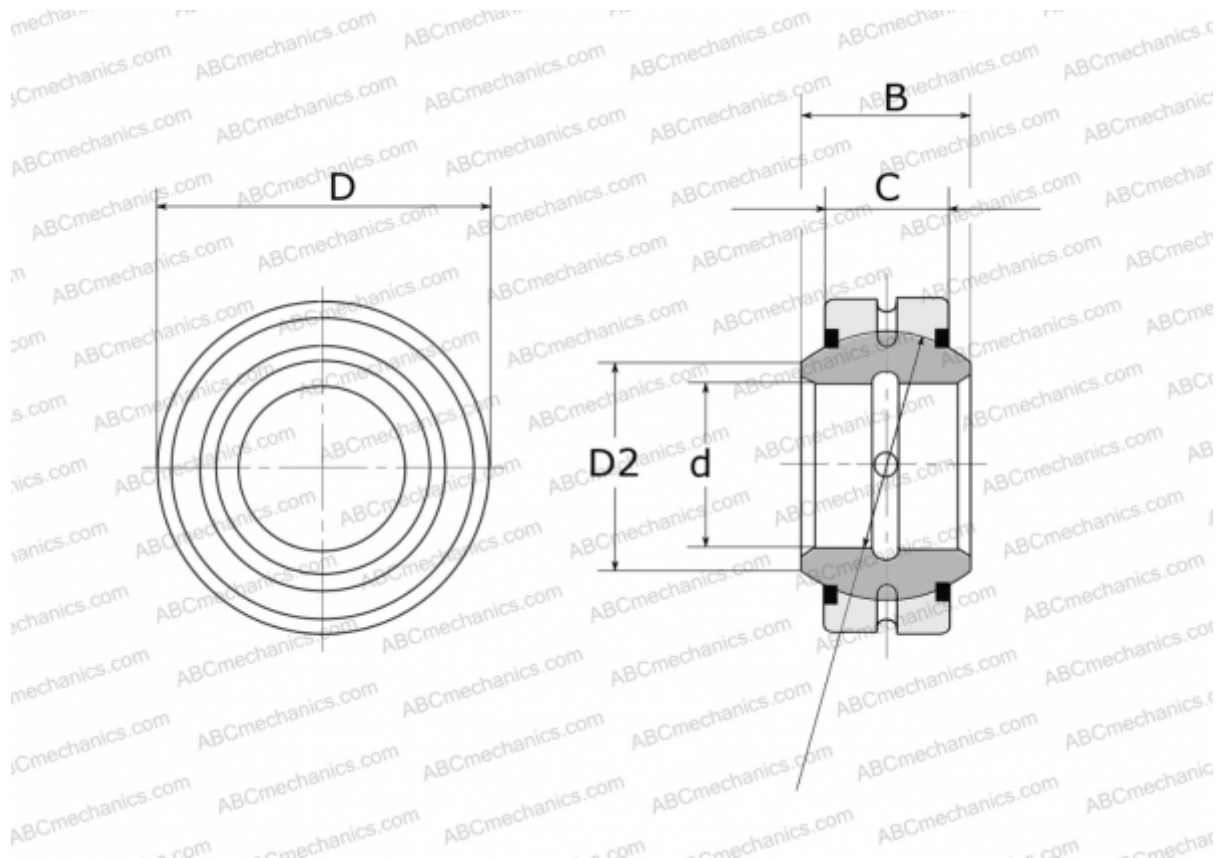


## GE 180 E-2RS FLURO

Spherical plain bearings

TYPE: Plain bearings, Spherical plain bearings and rod ends, Radial spherical plain bearings, Requiring maintenance, Series GE..E-2RS (FLURO)



### Technical specification

#### DIMENSIONS, MM

d	180,000
D	260,000
D2	198,900
B	105,000
f	225,000
C	80,000

**WEIGHT, KG** 18,500

**MANUFACTURER** [FLURO](#)