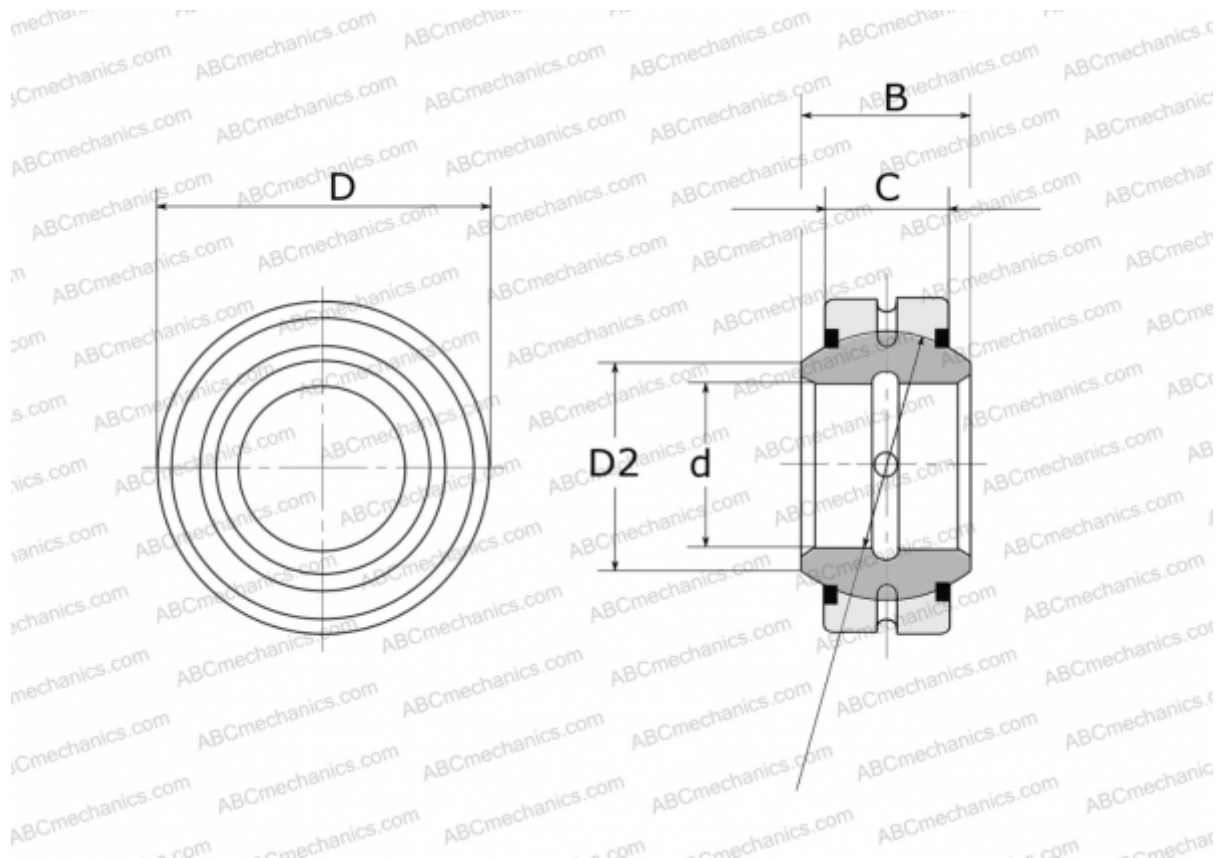


## GE 220 E-2RS FLURO

Spherical plain bearings

TYPE: Plain bearings, Spherical plain bearings and rod ends, Radial spherical plain bearings, Requiring maintenance, Series GE..E-2RS (FLURO)



### Technical specification

#### DIMENSIONS, MM

|    |         |
|----|---------|
| d  | 220,000 |
| D  | 320,000 |
| D2 | 239,500 |
| B  | 135,000 |
| f  | 275,000 |
| C  | 100,000 |

**WEIGHT, KG** 35,700

**MANUFACTURER** [FLURO](#)