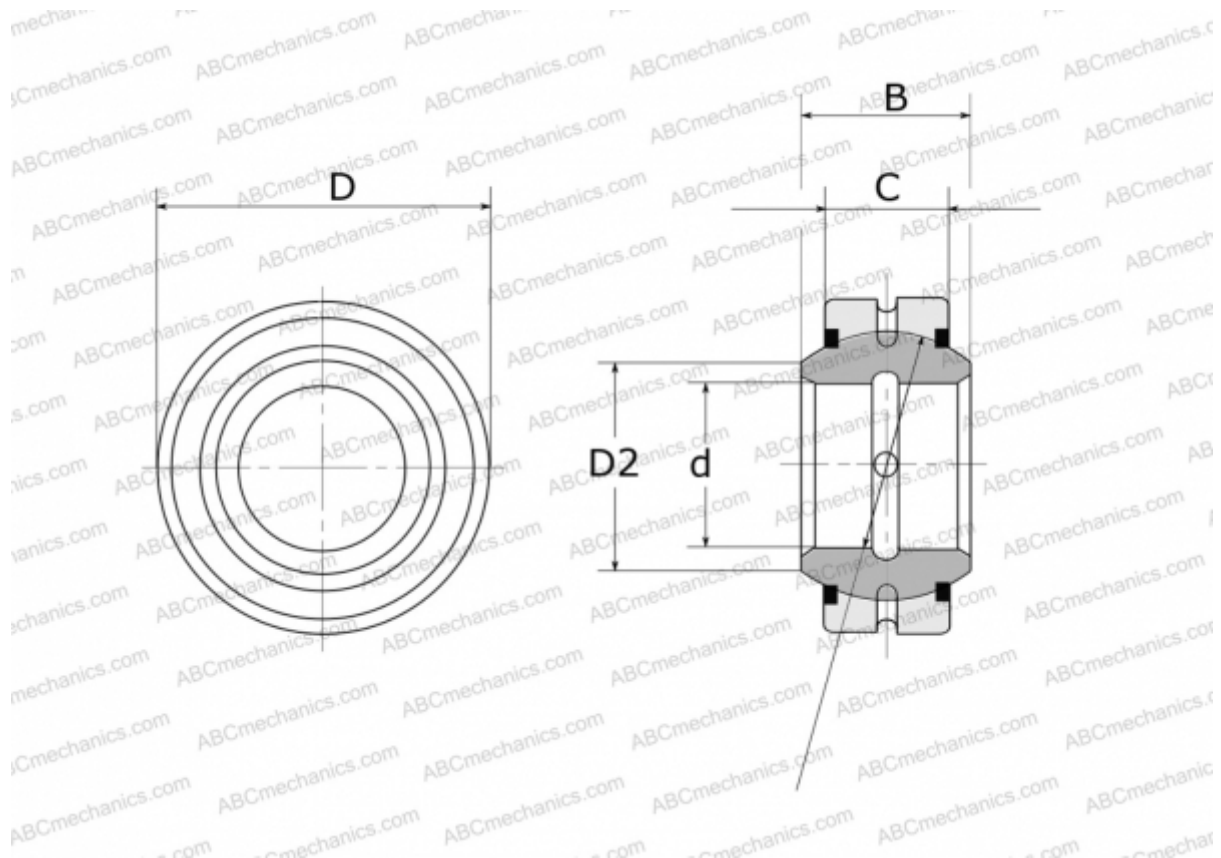


GE 240 E-2RS FLURO

Spherical plain bearings

TYPE: Plain bearings, Spherical plain bearings and rod ends, Radial spherical plain bearings, Requiring maintenance, Series GE..E-2RS (FLURO)



Technical specification

DIMENSIONS, MM

d	240,000
D	340,000
D2	265,300
B	140,000
f	300,000
C	100,000

WEIGHT, KG 39,700

MANUFACTURER [FLURO](#)