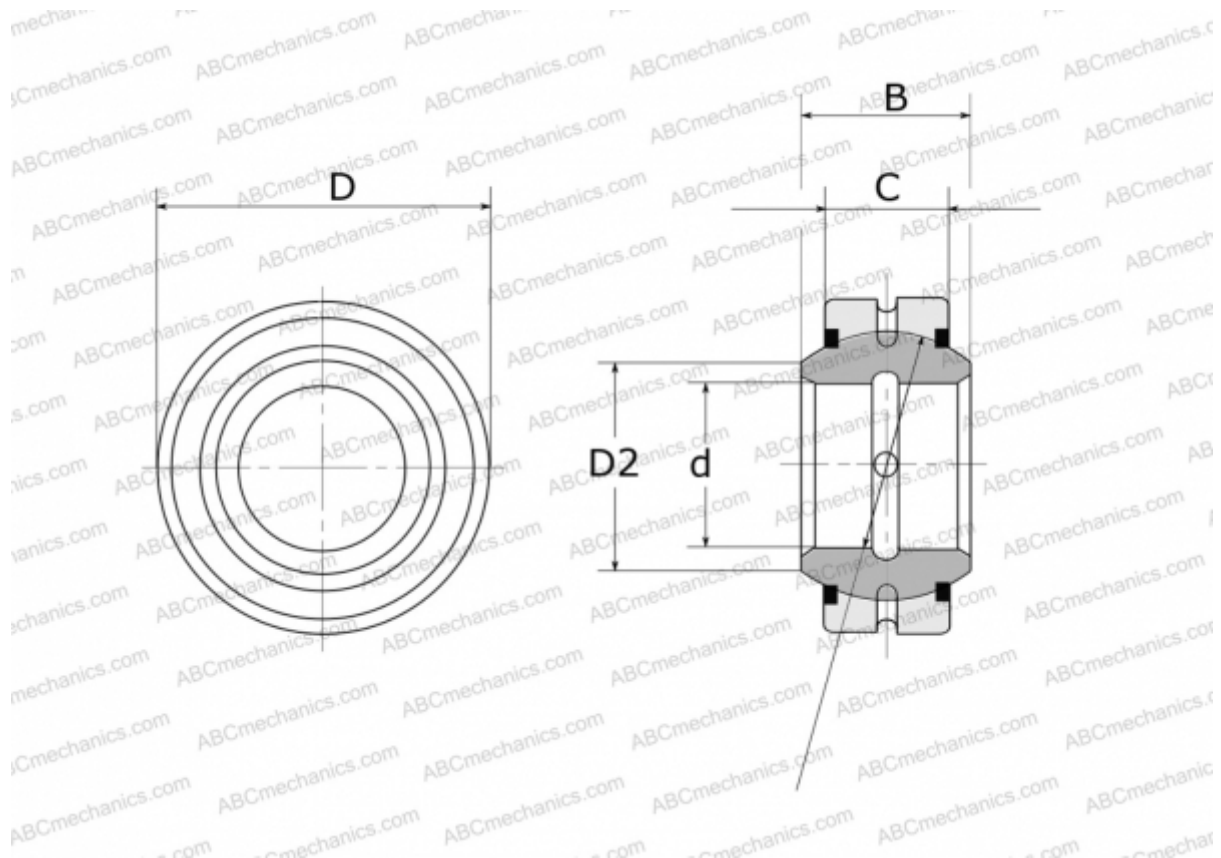


GE 260 E-2RS FLURO

Spherical plain bearings

TYPE: Plain bearings, Spherical plain bearings and rod ends, Radial spherical plain bearings, Requiring maintenance, Series GE..E-2RS (FLURO)



Technical specification

DIMENSIONS, MM

d	260,000
D	370,000
D2	288,300
B	150,000
f	325,000
C	110,000

WEIGHT, KG 51,500

MANUFACTURER [FLURO](#)