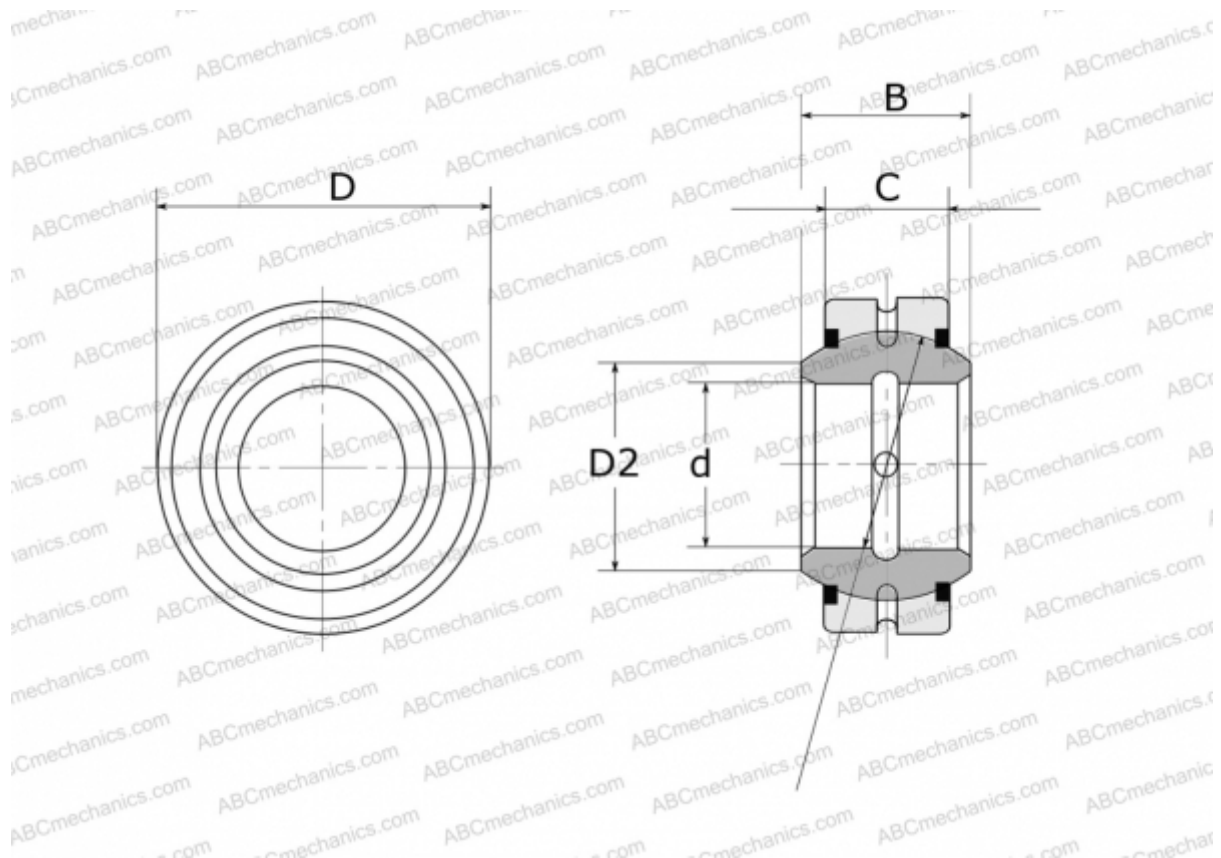


GE 280 E-2RS FLURO

Spherical plain bearings

TYPE: Plain bearings, Spherical plain bearings and rod ends, Radial spherical plain bearings, Requiring maintenance, Series GE..E-2RS (FLURO)



Technical specification

DIMENSIONS, MM

d	280,000
D	400,000
D2	313,800
B	155,000
f	350,000
C	120,000

WEIGHT, KG 64,900

MANUFACTURER [FLURO](#)