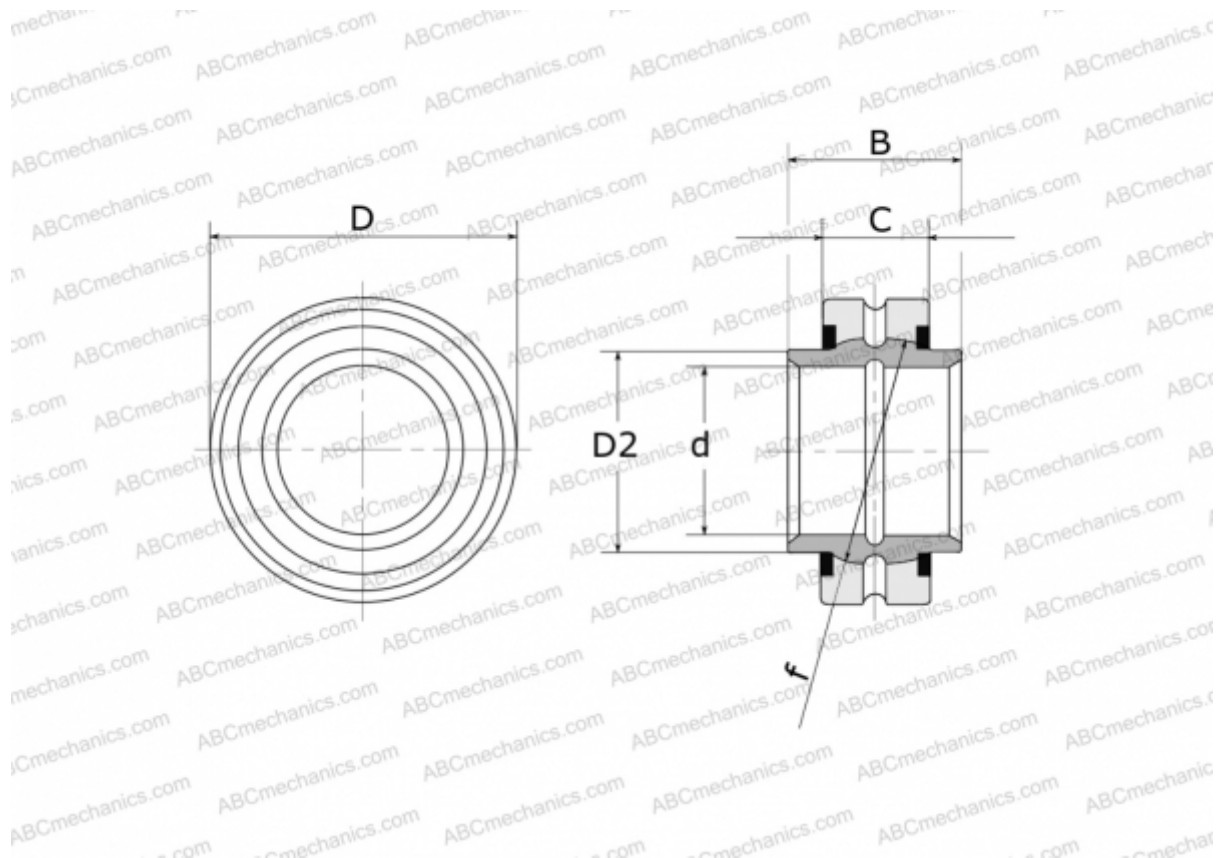


GE 20 HO-2RS FLURO

Spherical plain bearings

TYPE: Plain bearings, Spherical plain bearings and rod ends, Radial spherical plain bearings, Requiring maintenance, Series GE..-HO-2RS (FLURO), contact seals on both side



Technical specification

DIMENSIONS, MM

d	20,000
D	35,000
D2	24,000
B	24,000
f	29,000
C	12,000

MANUFACTURER [FLURO](#)