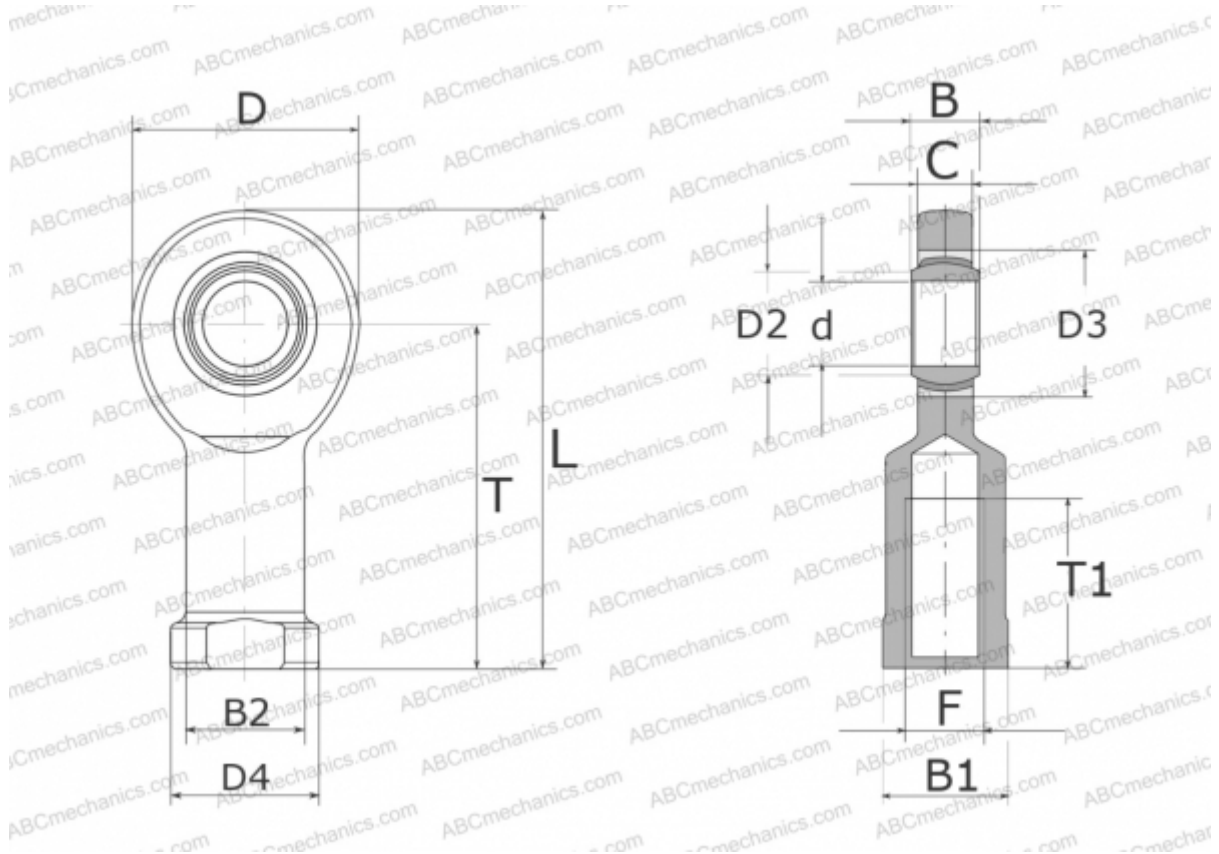


## GIR 15 UK ELGES

TYPE: Plain bearings, Spherical plain bearings and rod ends, Rod ends, Maintenance free, With internal thread, open design, right hand thread, series GIR.-UK (INA)



### Technical specification

#### DIMENSIONS, MM

|    |        |
|----|--------|
| d  | 15,000 |
| D  | 40,000 |
| D2 | 18,400 |
| D3 | 26,000 |
| D4 | 26,000 |
| B  | 12,000 |
| B1 | 22,000 |
| B2 | 21,000 |
| L  | 81,000 |
| T  | 61,000 |
| T1 | 30,000 |
| C  | 10,000 |
| F  | M14    |

#### MANUFACTURER

[ELGES](#)

#### WEIGHT, KG

0,180