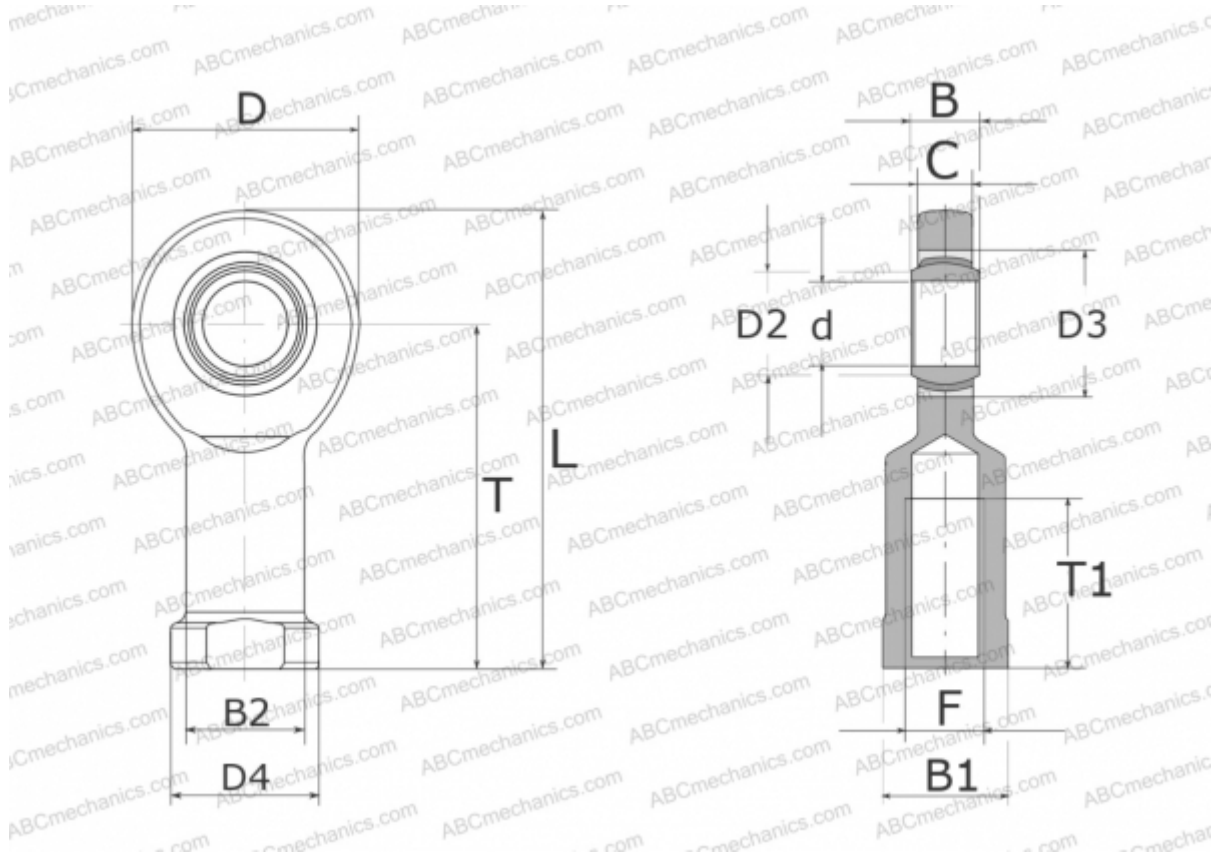


GIL25-UK ELGES

TYPE: Plain bearings, Spherical plain bearings and rod ends, Rod ends, Maintenance free, With internal thread, open design, left hand thread, series GIL..-UK (INA)



Technical specification

DIMENSIONS, MM

| | |
|----|---------|
| d | 25,000 |
| D | 64,000 |
| D2 | 29,300 |
| D3 | 42,000 |
| D4 | 42,000 |
| B | 20,000 |
| B1 | 36,000 |
| B2 | 33,500 |
| L | 126,000 |
| T | 94,000 |
| T1 | 48,000 |
| C | 17,000 |
| F | M24X2 |

MANUFACTURER

[ELGES](https://www.elges.com)

WEIGHT, KG

0,600