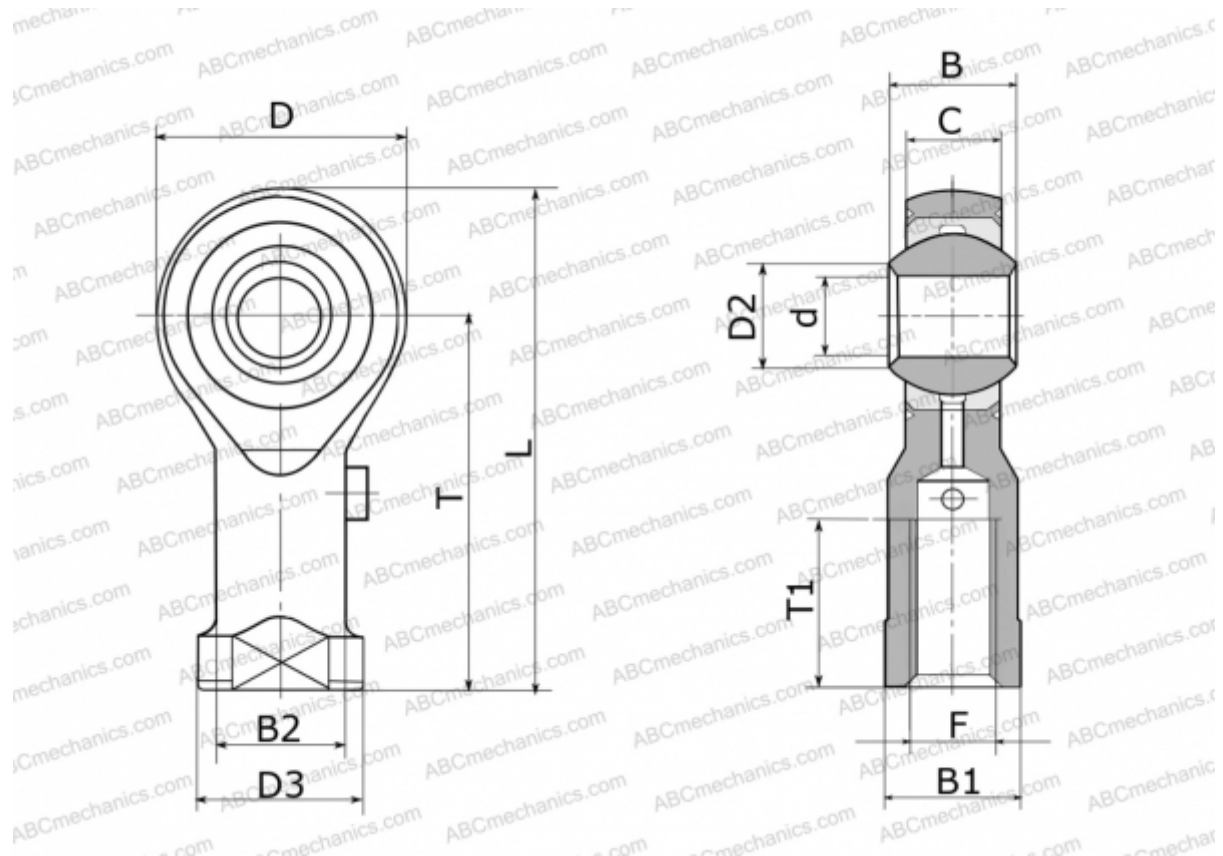


GIKSR25-PS ELGES

TYPE: Plain bearings, Spherical plain bearings and rod ends, Rod ends, Maintenance free, With internal thread, corrosion-resistant, open design, right hand thread, series GIKSR.-PS, GIKPSR.-PS (INA)



Technical specification

DIMENSIONS, MM

d	25,000
D	61,000
D2	29,600
D3	42,000
B	31,000
B1	36,000
B2	33,500
L	124,500
T	94,000
T1	36,000
C	22,000
F	M24X2

MANUFACTURER

[ELGES](#)

WEIGHT, KG

0,650