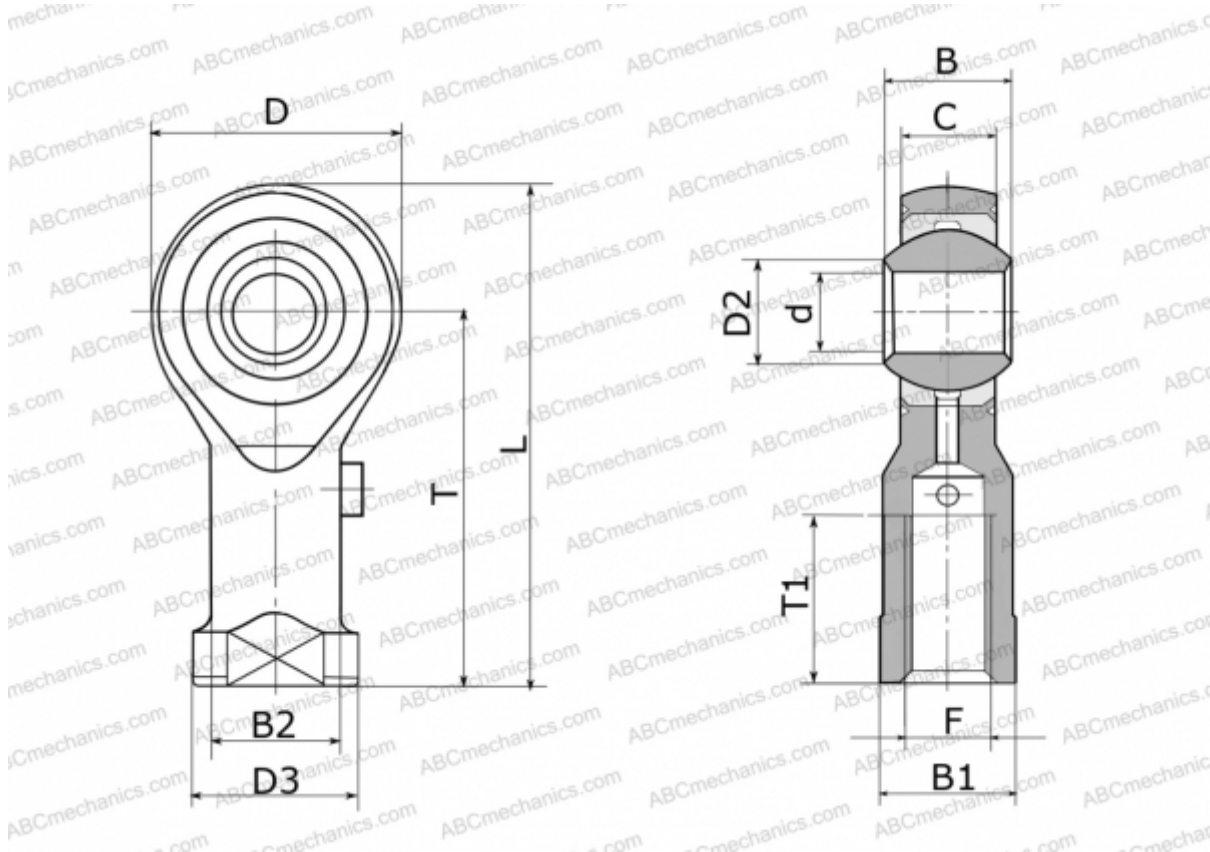




GIKPSR30-PS ELGES

TYPE: Plain bearings, Spherical plain bearings and rod ends, Rod ends, Maintenance free, With internal thread, corrosion-resistant, open design, right hand thread, series GIKSR.-PS, GIKPSR.-PS (INA)



Technical specification

DIMENSIONS, MM

| | |
|----|---------|
| d | 30,000 |
| D | 71,000 |
| D2 | 34,800 |
| D3 | 50,000 |
| B | 37,000 |
| B1 | 41,000 |
| B2 | 40,000 |
| L | 145,500 |
| T | 110,000 |
| T1 | 45,000 |
| C | 25,000 |
| F | M27X2 |

WEIGHT, KG 1,150

MANUFACTURER

[ELGES](#)

