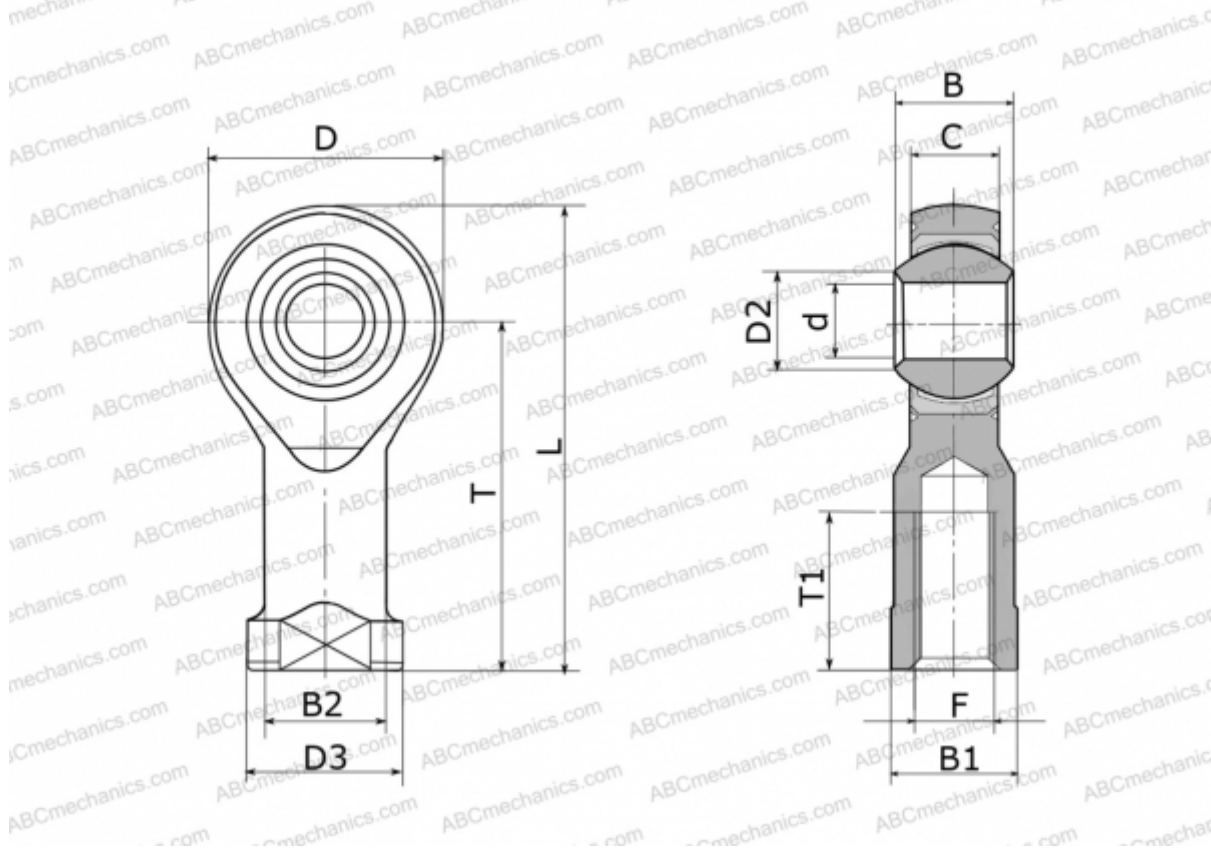


GIRSW 22 FLURO

TYPE: Plain bearings, Spherical plain bearings and rod ends, Rod ends, Maintenance free, With internal thread, open design, right hand thread, stainless steel, series GIRSW (FLURO)



Technical specification

DIMENSIONS, MM

| | |
|----|----------|
| d | 22,000 |
| D | 54,000 |
| D2 | 25,800 |
| D3 | 37,000 |
| B | 28,000 |
| B1 | 32,000 |
| B2 | 30,000 |
| L | 111,000 |
| T | 84,000 |
| T1 | 37,000 |
| C | 20,000 |
| F | M 22x1.5 |

MANUFACTURER

FLURO

WEIGHT, KG

0,540